

NEPLAM[®]
DECORATIVE LAMINATES

**GIVE YOUR
FURNITURE AN
EXQUISITE TOUCH**

NEPLAM[®]
DECORATIVE LAMINATES
Laminates Valley - 501 Branch Of
PUNJ LENSES & LAMINATES

 **TRENDS | 22**

 **TRENDS | 22**

N Neptune
LAMINATES PVT LTD

Survey No. 119/2, Veraval-Padavla Main Road, Village : Padavla,
Tal.: Kotada Sangani, Dist.: Rajkot - 360024 (Gujarat) INDIA.

Cell : +91 80000 08110
E-mail : neptunelaminates@gmail.com
info@neptunelaminates.com
Web : www.neptunelaminates.com



WHAT'S INSIDE?



A NEW AGE MICA FOR DECOR

ABOUT US...

One of the leading manufacturer of decorative laminates, Neptune Laminates is a global manufacturer and distributor of high pressure laminate used in furniture, office, retail space and other applications. The company sales decorative laminates and other engineered surface under the NEPLAM brand.



NEPLAM came with many distinguished designs and textures: stunning woodgrain, variety of plain colors, luxurious look of metallic laminates and even your own unique design in textures, glossy, matt, suede and other finishes.

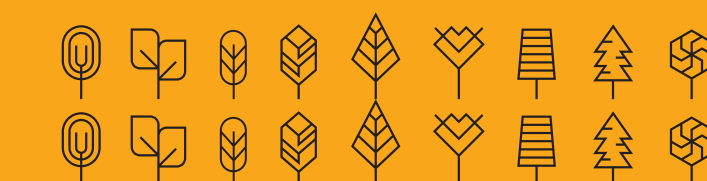
You can find a wide variety of laminate designs in our catalogue from which you can choose the best laminate for your home, office or any other premises. Laminate catalog will help you to find out the perfect laminate as it features the best laminate designs.

The company quality policy is to confirm the management system as per ISO 9001:2008 standard. We design and develop laminate whose purpose is to be a constant motive of pride for our customers.

We place our customer's expectations at the heart of our actions, both internal and external. Our benchmark for achieving success is the satisfaction of our customers and their loyalty towards the company.

Our activities are structured and systematically harmonized. Our strategy, orientation, quality awareness as well as the constant commitment of our management and staff leads us to excellent performance.

It is our goal to be the world's leading laminate group with regards to customer satisfaction and value creation.



LUXURY ART



Fill your home with
a Distinguished Aura

Decorate your wall with an exquisite texture
of Pearl Granite to enhance your interior.

01

●●● PEARL GRANITE

NEPLAM®
DECORATIVE LAMINATES



Laminates Valley - Sub Branch Of
PUN VENEERS & LAMINATES

N-43 - 5181

02

SHINY ASH



NEPLAM®
DECORATIVE LAMINATES



N-54 - 5173



N-54 - 5175

Laminates Valley - Sub Branch Of
PUN VENEERS & LAMINATES



N-54 - 5026

RUSTIC GLOSS



N-27 - 5178

Magnificent Moments
of Serenity & Superiority



Laminates Valley - Sub Branch Of
PUN VENEERS & LAMINATES



N-27 - 5177

●● ZERO HORIZONTAL FINISH



NEPLAM®
DECORATIVE LAMINATES



N-53 - 5051 HZ



N-53 - 5164 HZ

Laminates Valley - Sub Branch Of
PUN VENEERS & LAMINATES



N-53 - 5021 HZ

●●● HEXAGON 3D



NEPLAM®
DECORATIVE LAMINATES



N-50 - 5175



N-50 - 51120

Laminates Valley - Sub Branch Of
PUN VENEERS & LAMINATES



N-50 - 51119

FANTASY ASH

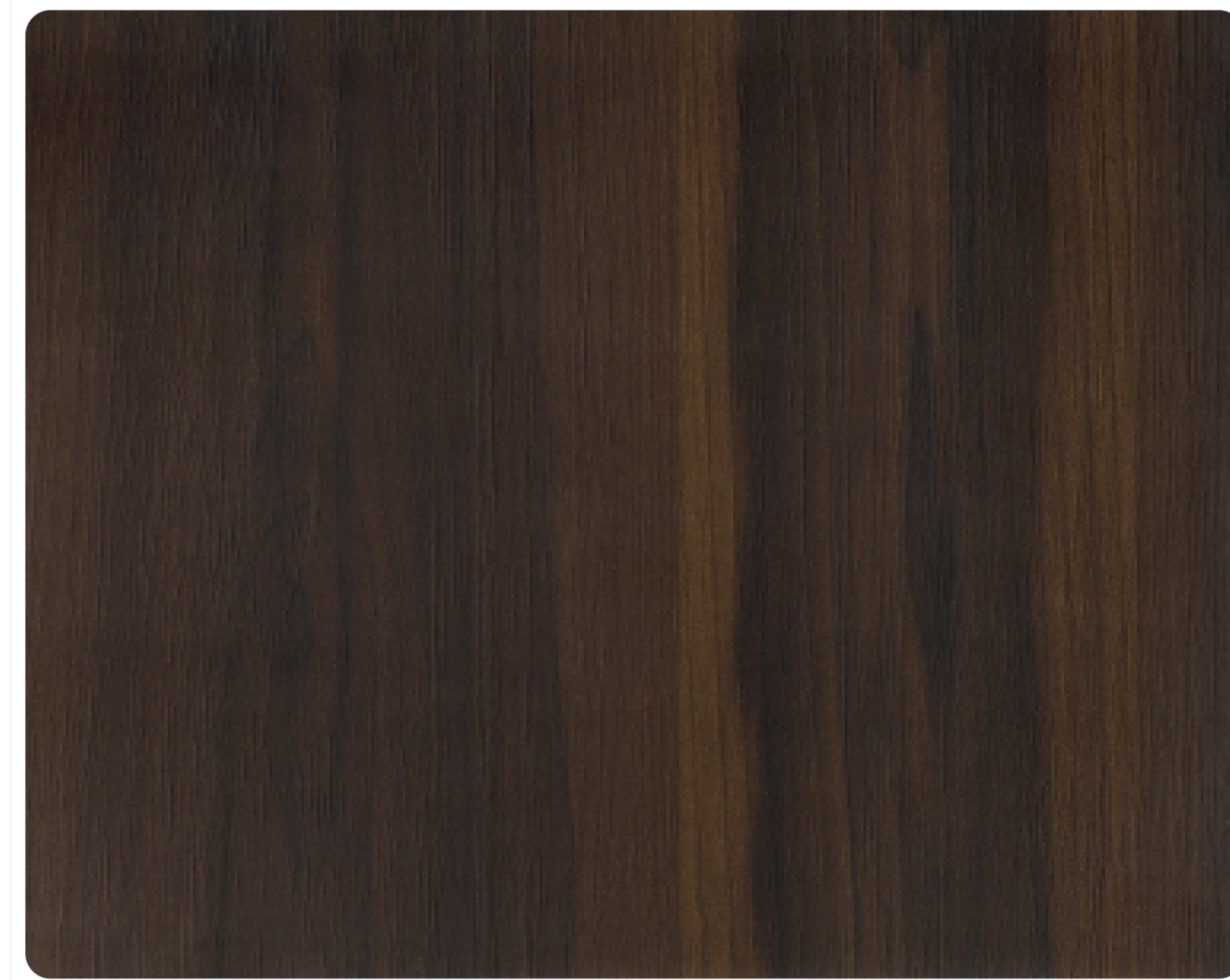


N-55 - 5076

A robust interior with warmth, richness and a great finesse!!



Laminates Valley - Sub Branch Of
PUN VENEERS & LAMINATES



N-55 - 5028

HORIZONTAL OAK



Laminates Valley - Sub Branch Of
PUN VENEERS & LAMINATES

N-13 - 5173 HZ

N-13 - 5172 HZ



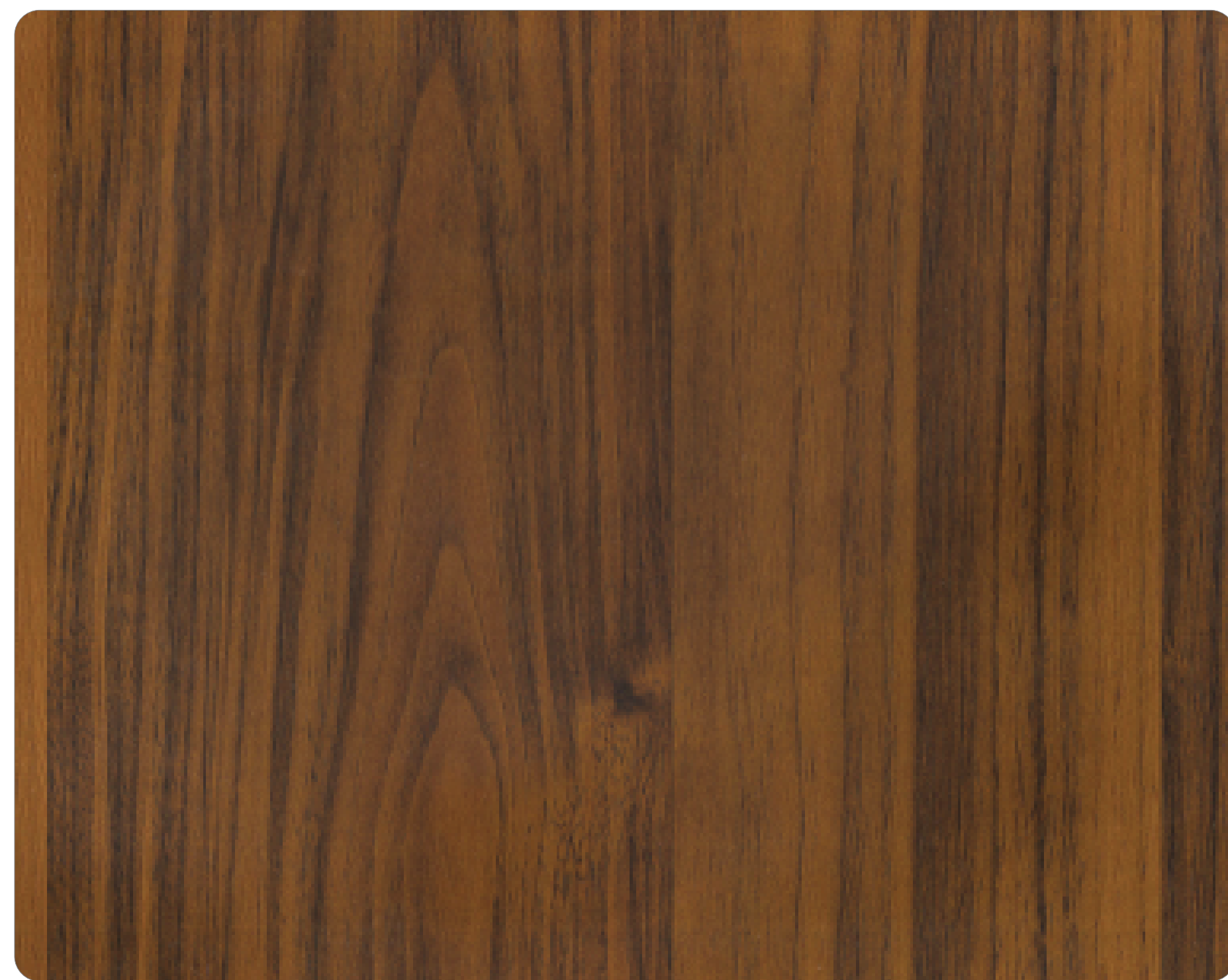
N-13 - 5090 HZ



N-13 - 5091 HZ



🍃 N-56 - 5172 🍃



🍃 N-56 - 5182 🍃

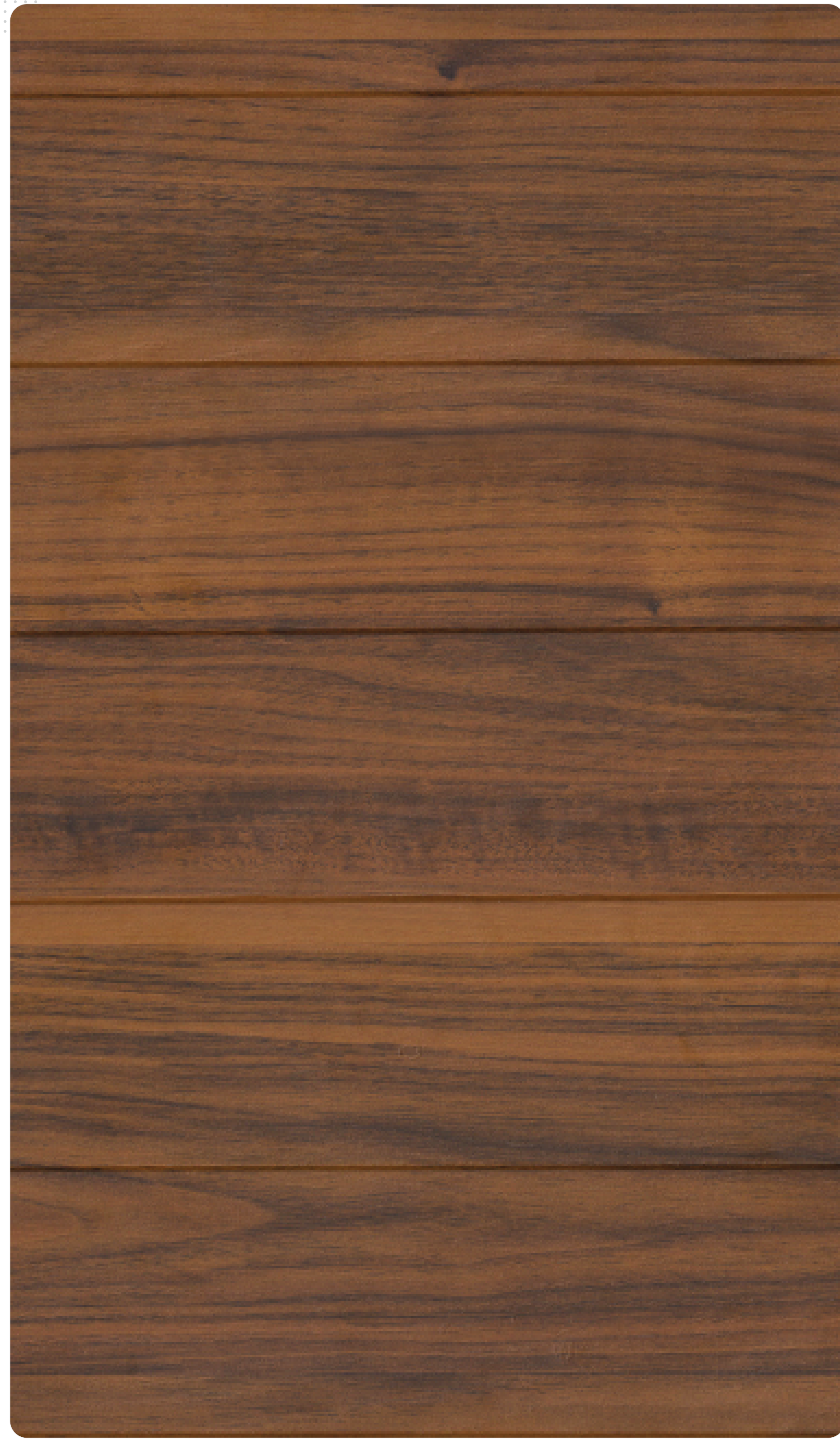


🍃 N-56 - 5025 🍃

●● GLORY LINE



NEPLAM®
DECORATIVE LAMINATES



N-18 - 5182 HZ



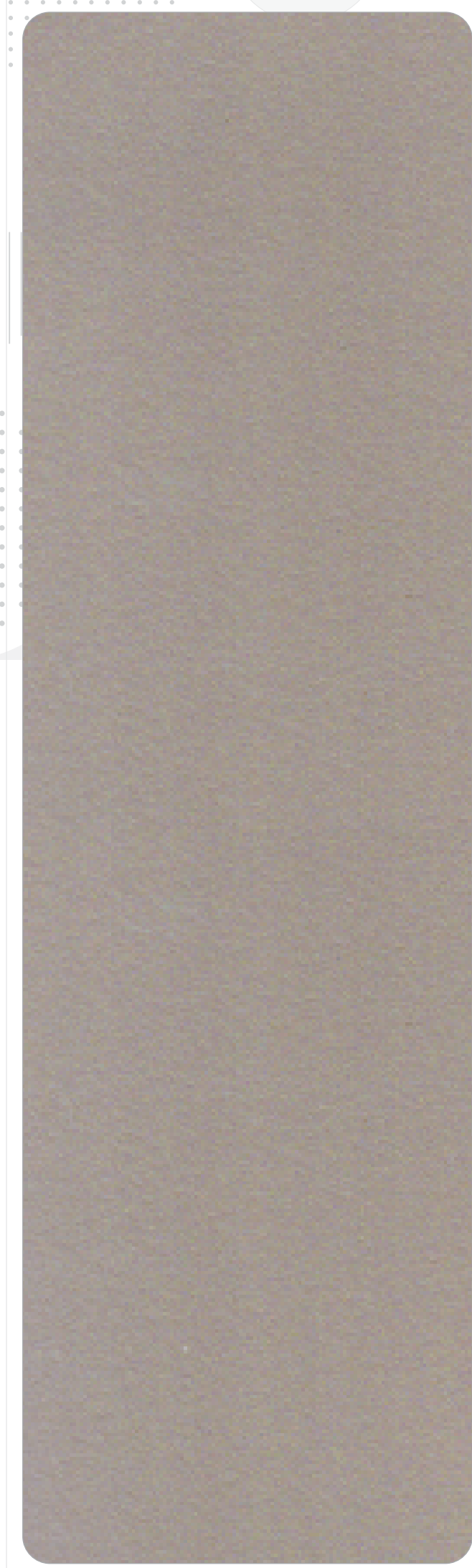
N-18 - 5028 HZ


Laminates Valley - Sub Branch Of
PUN VENEERS & LAMINATES

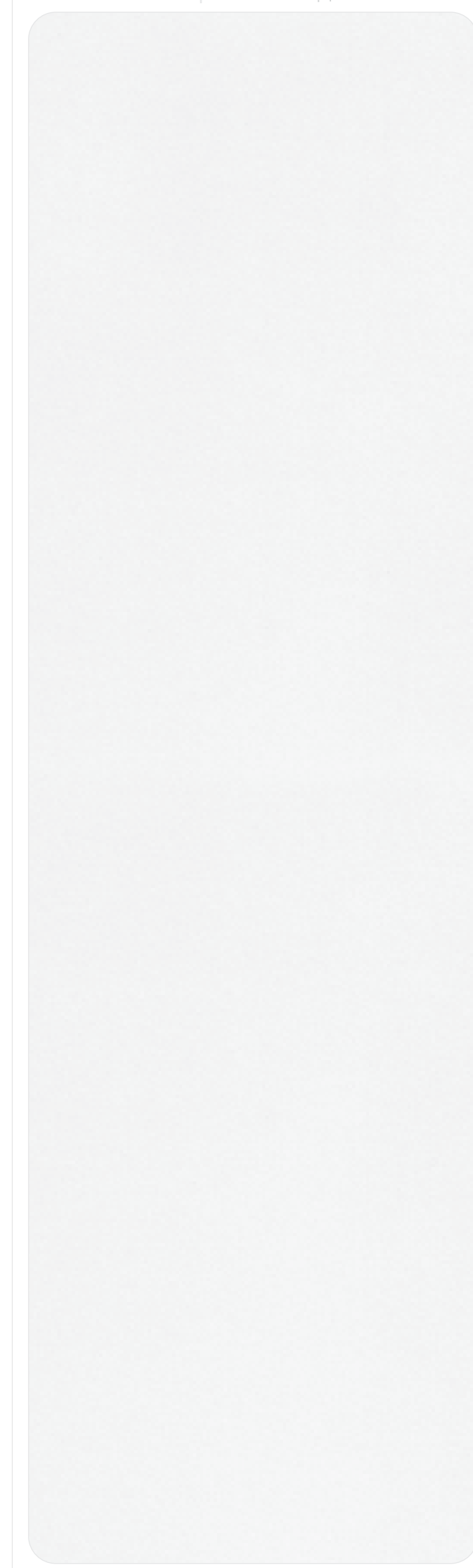


N-18 - 5173 HZ

METALLIC PU



N-56 - 5156



N-56 - 5155



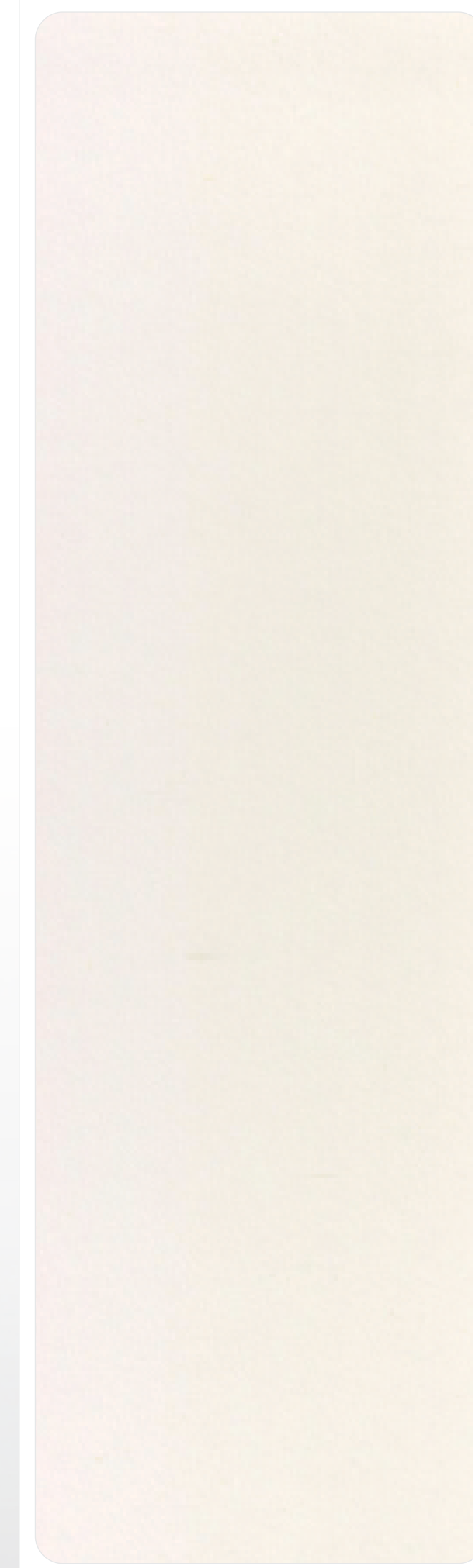
N-56 - 5157



PLAIN PU



N-56 - 516



N-56 - 502

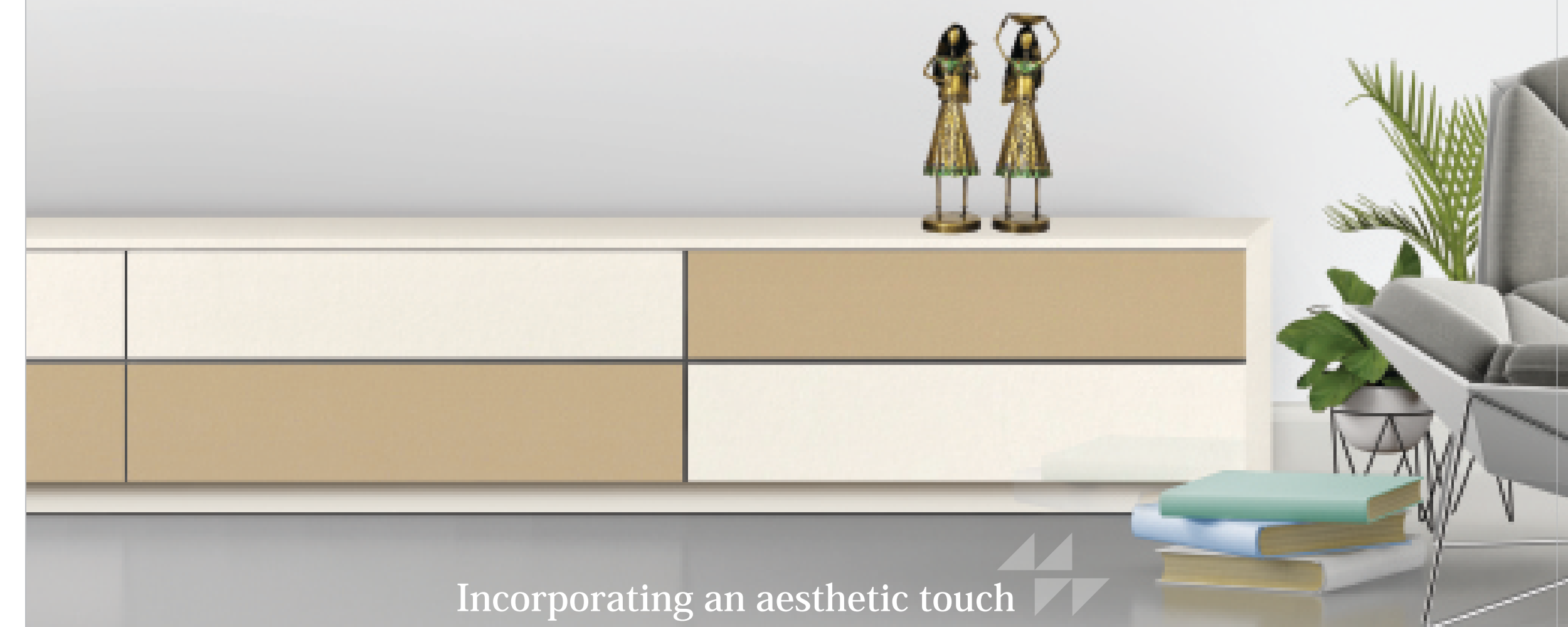


N-56 - 515

Bringing a refreshing radiance to the furniture



N-56 - 5158



Incorporating an aesthetic touch

LEATHER LINE



N-57 - 514



N-57 - 515



N-57 - 502



N-57 - 512

VINTAGE BLOCKS



N-22 - 5090 HZ



N-22 - 5091 HZ



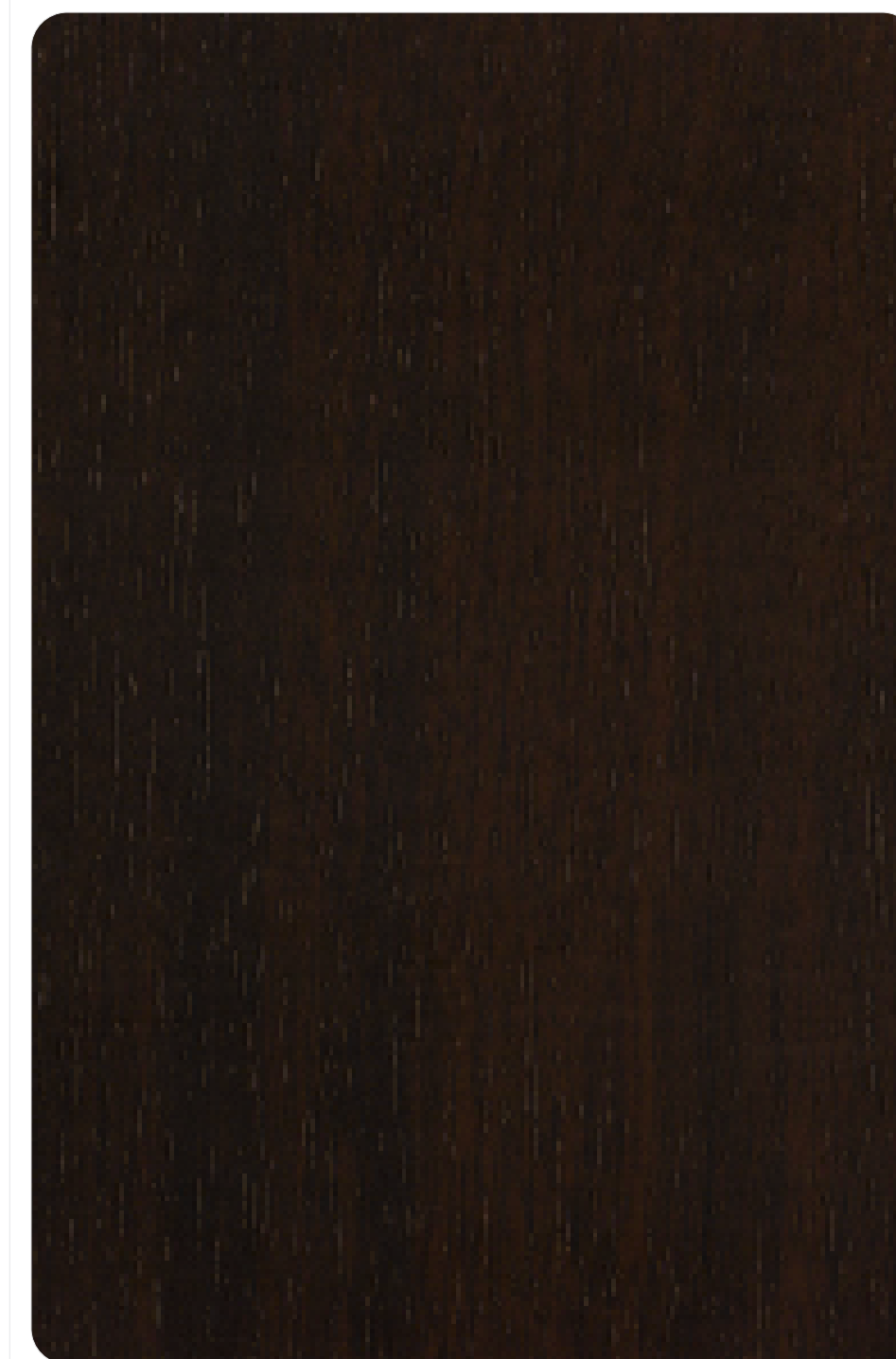
●● ANTIQUE OAK



N-06 - 5175



Laminates Valley - Sub Branch Of
PUN VENEERS & LAMINATES



N-06 - 5059



N-06 - 5014

●● ANTIQUE OAK



🍃 N-06 - 5172 🍃



🍃 N-06 - 5081 🍃


Laminates Valley - Sub Branch Of
PUN VENEERS & LAMINATES



🍃 N-06 - 5057 🍃

HORIZONTAL WOOD



N-32 - 5010

STONEX



N-17 - 51114

Laminates Valley - Sub Branch Of
PUN VENEERS & LAMINATES



N-32 - 5011



N-17 - 51113

COTTAGE ASH



N-38 - 5179



N-38 - 5082



N-38 - 5083

Laminates Valley - Sub Branch Of
PUN VENEERS & LAMINATES

●● MYSTIC STONE



NEPLAM®
DECORATIVE LAMINATES



Laminates Valley - Sub Branch Of
PUN VENEERS & LAMINATES

N-52 - 5177

N-52 - 5178

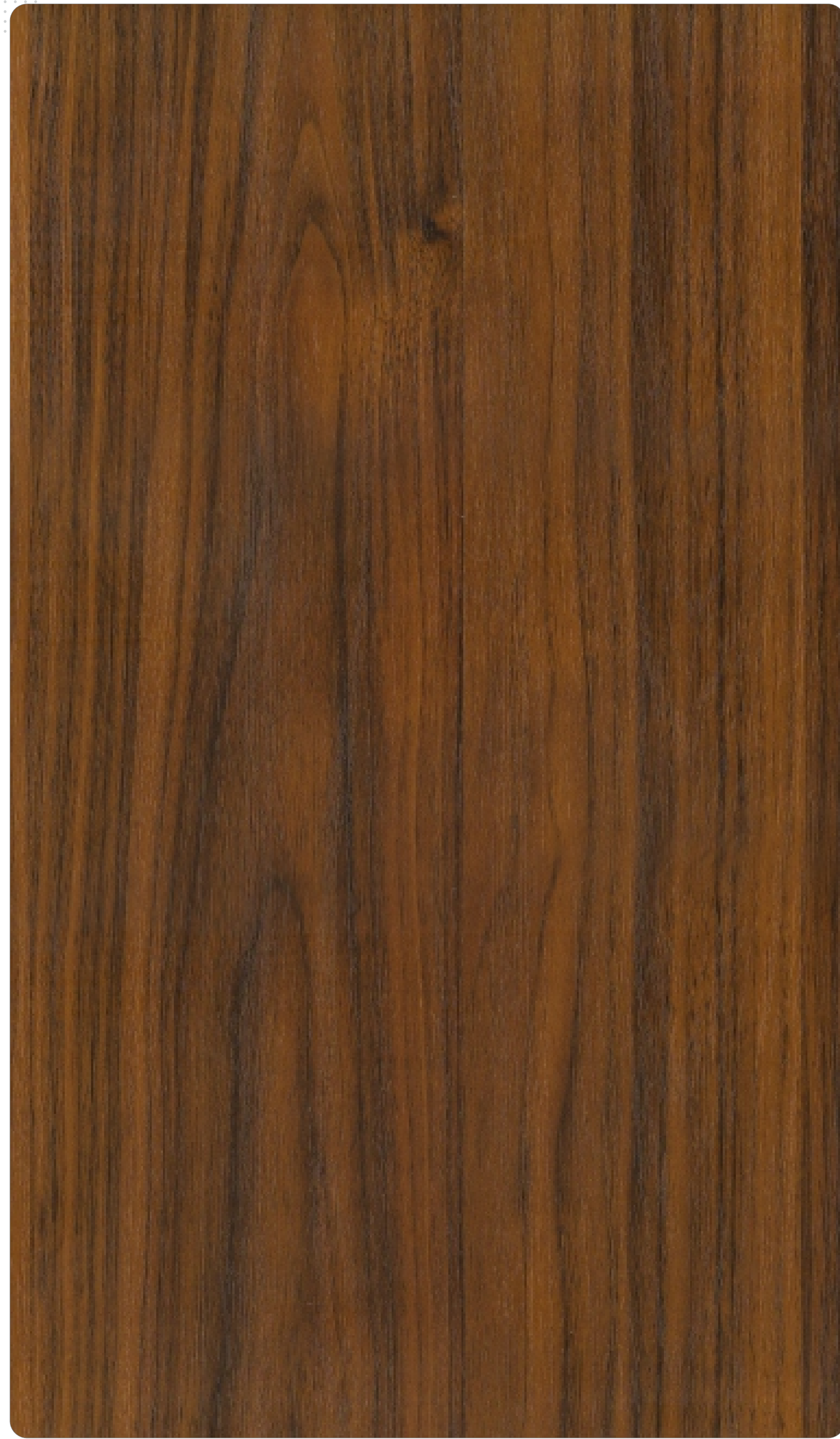
Create a pleasant atmosphere with an Extraordinary Decor



●● DARK CHOCOLATE ASH



NEPLAM®
DECORATIVE LAMINATES



N-15 - 5182



N-15 - 5026

Laminates Valley - Sub Branch Of
PUN VENEERS & LAMINATES



N-15 - 5027

●● DARK CHOCOLATE ASH



🍃 N-15 - 5050 🍃

●● LEATHER LINE



🍃 N-57 - 5142 🍃



🍃 N-57 - 5141 🍃


Laminates Valley - Sub Branch Of
PUN VENEERS & LAMINATES

●● VERTICAL CHANNEL



N-58 - 5176



NEPLAM
DECORATIVE LAMINATES

Laminates Valley - Sub Branch Of
PUN VENEERS & LAMINATES



N-58 - 5174

●● DESERT IRON WOOD



N-39 - 5063

●● RUSTIC GLOSS



N-27 - 5045



N-39 - 5081



N-27 - 5046

LUXURY MATT FINISH



N-05 - 5172



N-05 - 5082



N-05 - 5083



VINTAGE WOOD



N-59 - 5061

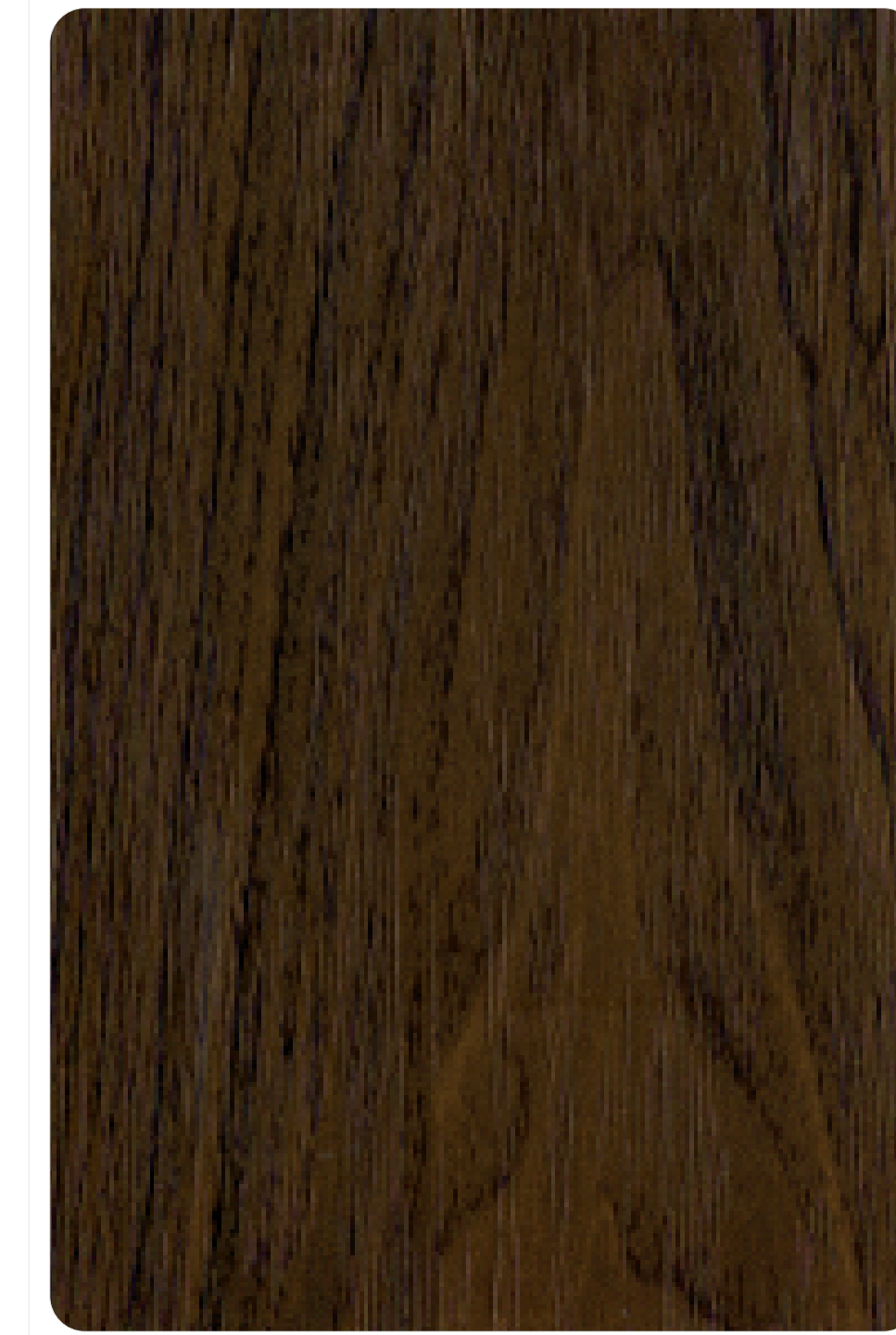


N-59 - 5052

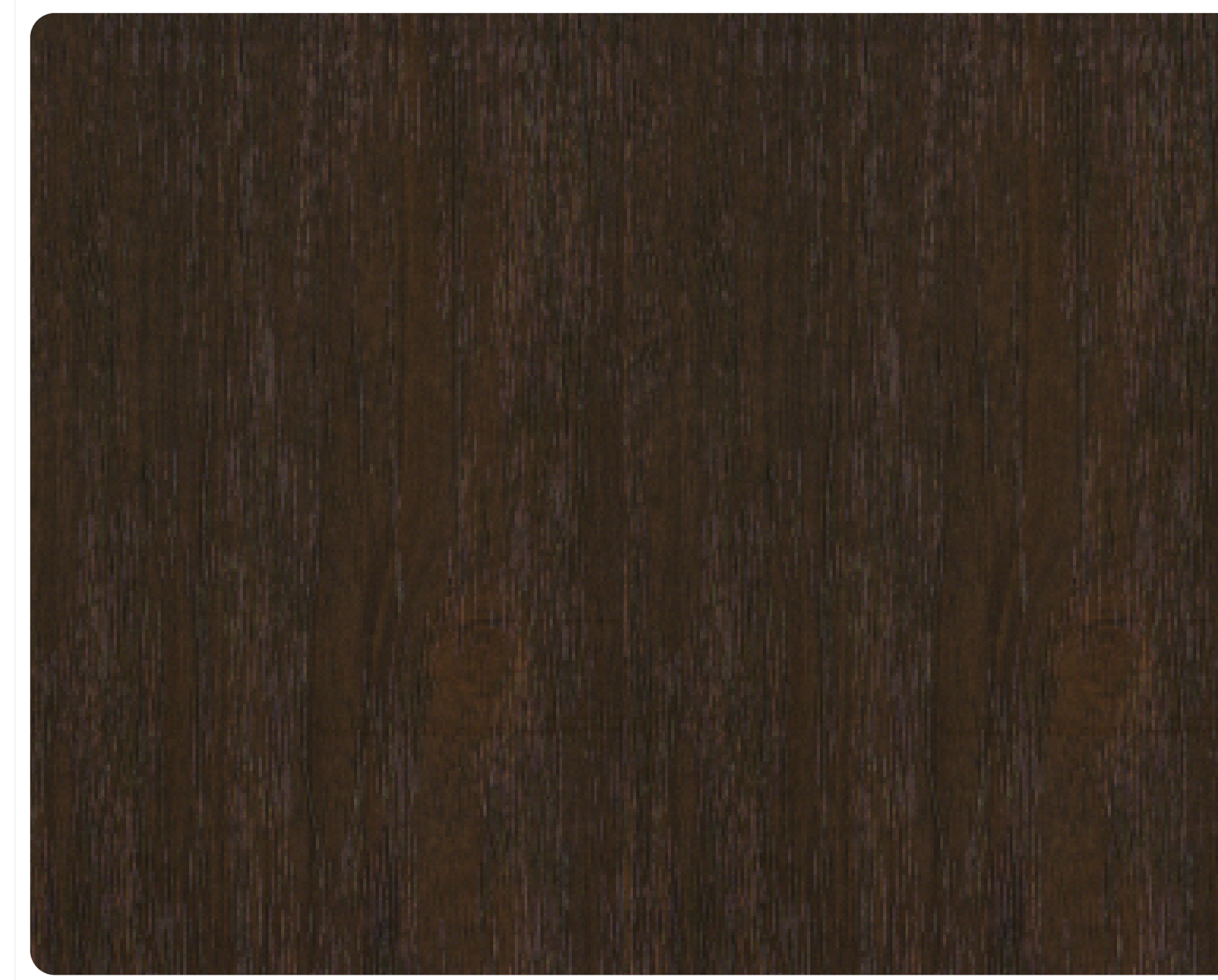
EMERALD ASH



N-33 - 5063



N-33 - 5078



N-33 - 5080

ZERO OAK



N-02 - 5130



NEPLAM®
DECORATIVE LAMINATES



N-02 - 51126



Laminates Valley - Sub Branch Of
PUN VENEERS & LAMINATES

An intriguing combination of Modern & Classic perspective



N-02 - 5129



●●● ORCHID WOOD



🍃 N-29 - 51121 🍃

●●● RICH SATINWOOD



🍃 N-37 - 5090 HZ 🍃



🍃 N-29 - 5026 🍃



🍃 N-29 - 5014 🍃

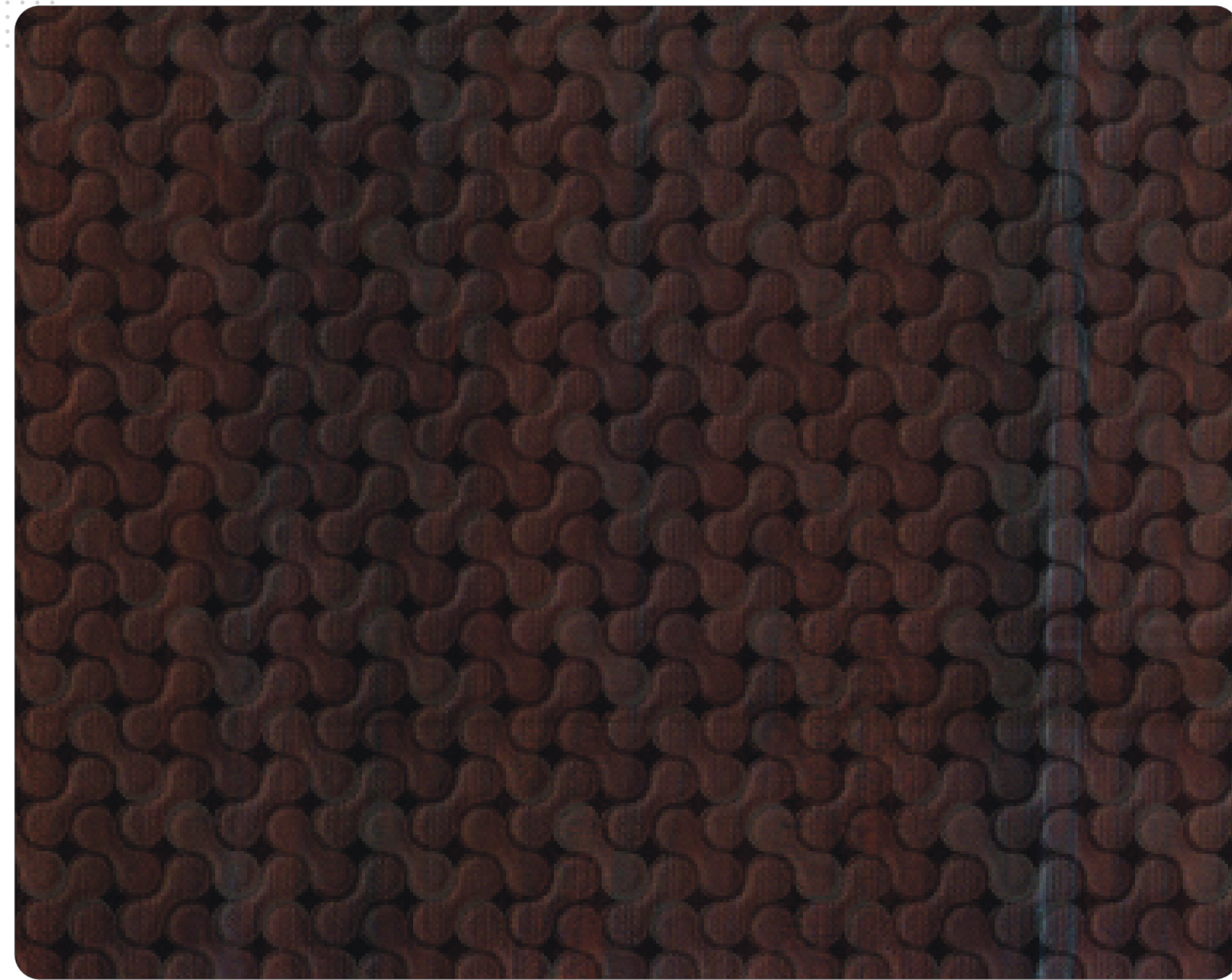


🍃 N-37 - 5091 HZ 🍃

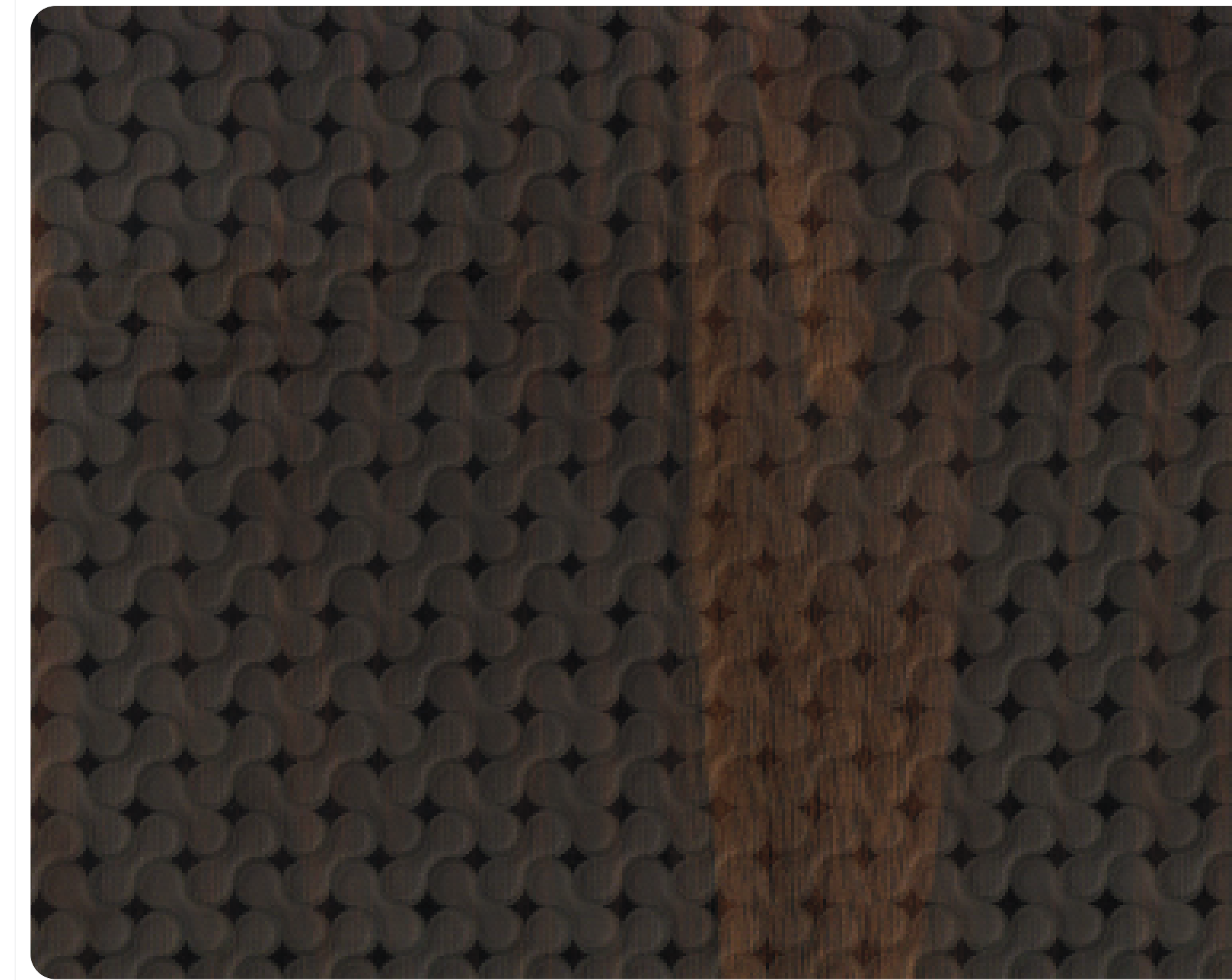
●●● TOUCH & FEEL



NEPLAM®
DECORATIVE LAMINATES

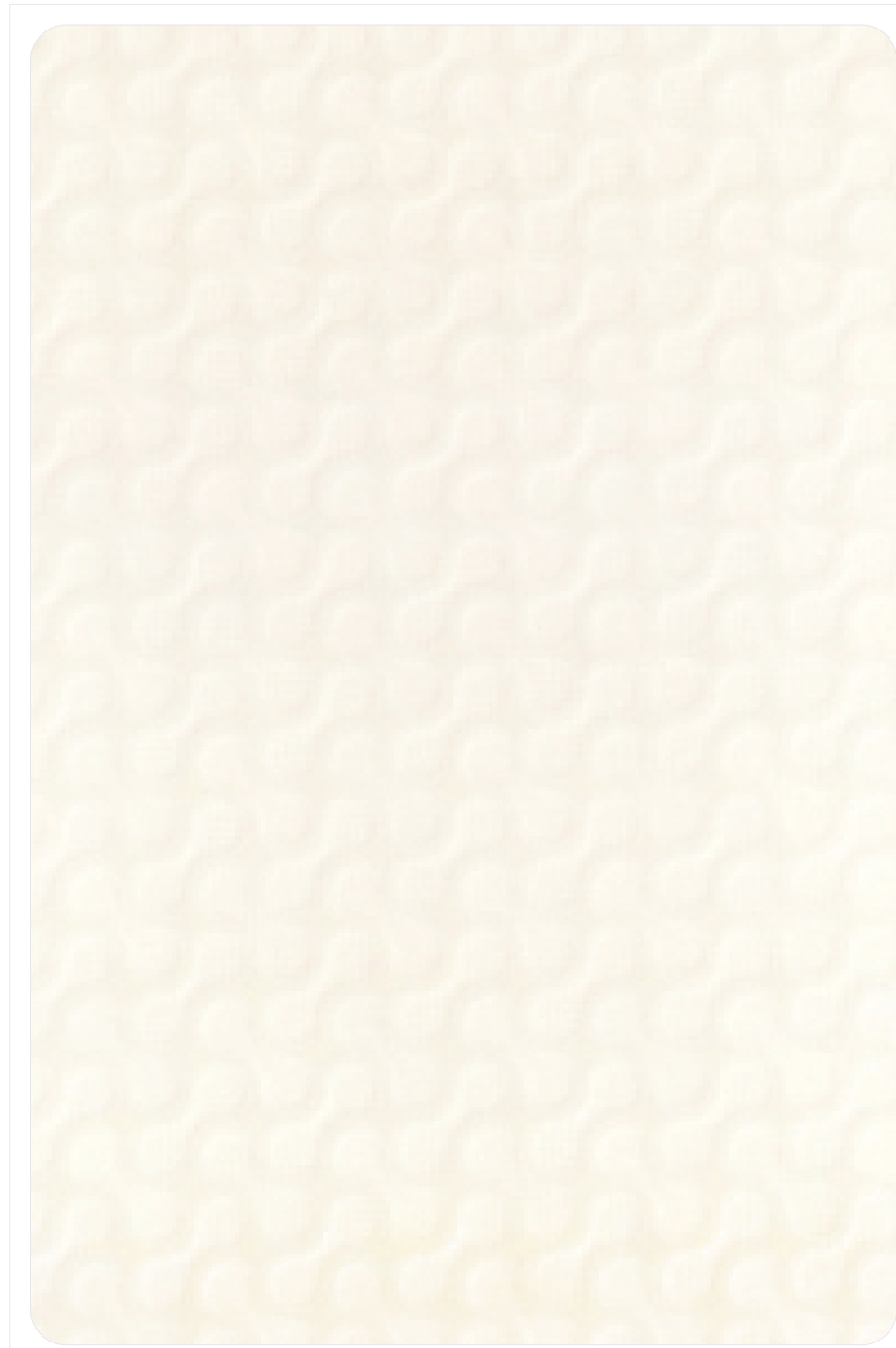


N-60 - 5063

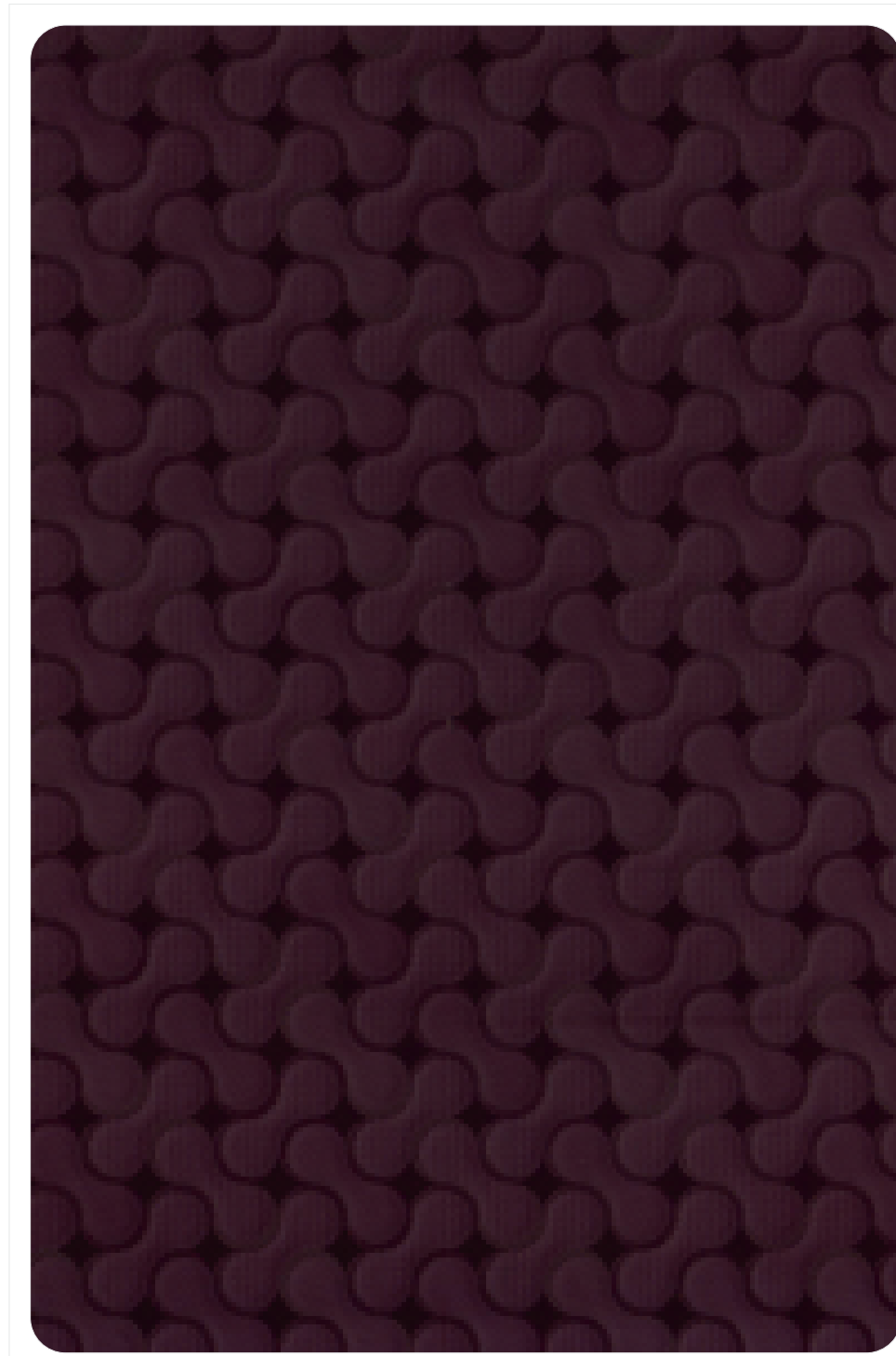


N-60 - 51111

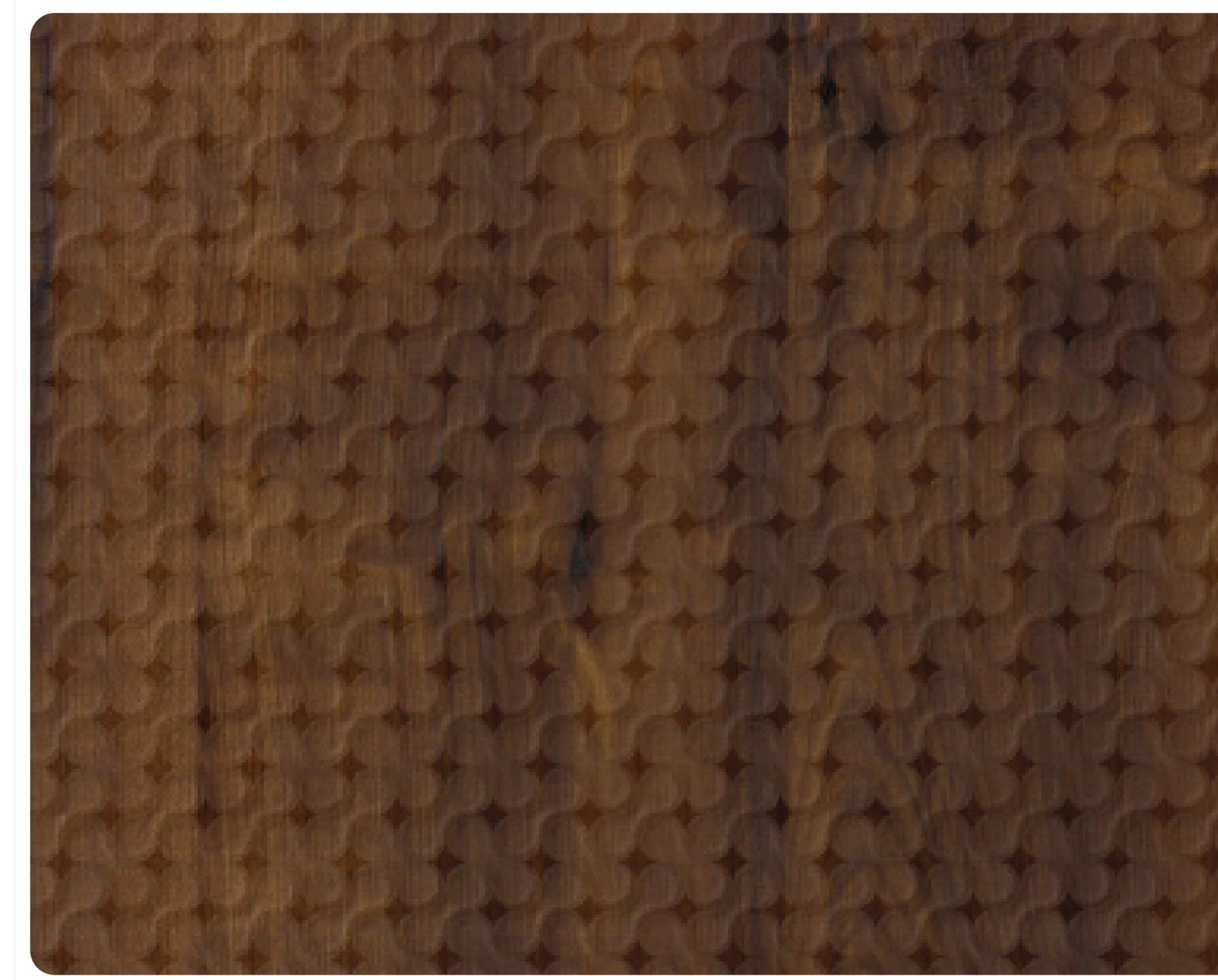
Laminates Valley - Sub Branch Of
PUN VENEERS & LAMINATES



N-60 - 502



N-60 - 506



N-60 - 51101

●●● BIANCO MARBLE



👉 N-46 - 5183 👈

●●● SOFT OAK



👉 N-20 - 5079 HZ 👈



👉 N-20 - 5082 HZ 👈


Laminates Valley - Sub Branch Of
PUN VENEERS & LAMINATES

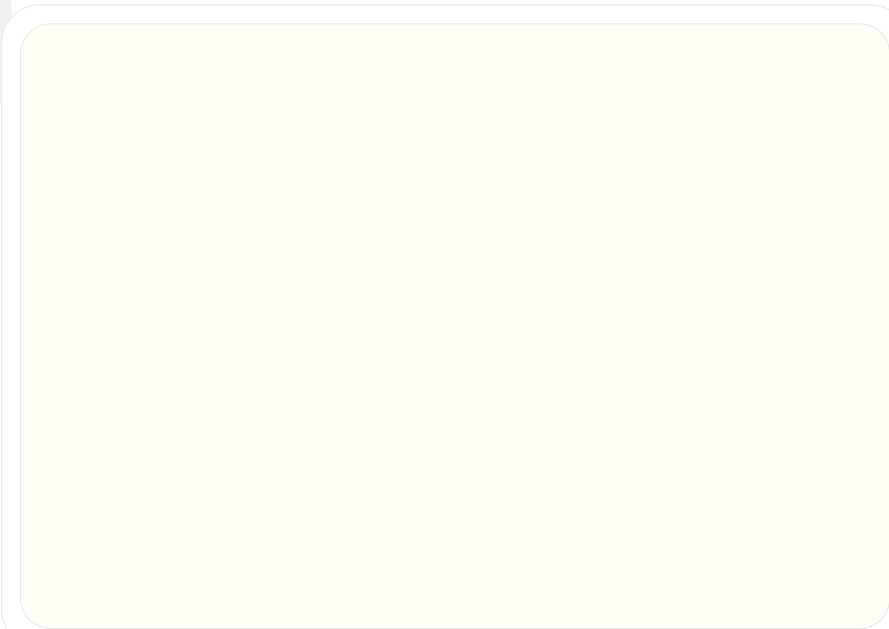
UNI COLOUR CORE



CCC - 512



CCC - 515



CC - 502



CCC - 509



CCC - 506

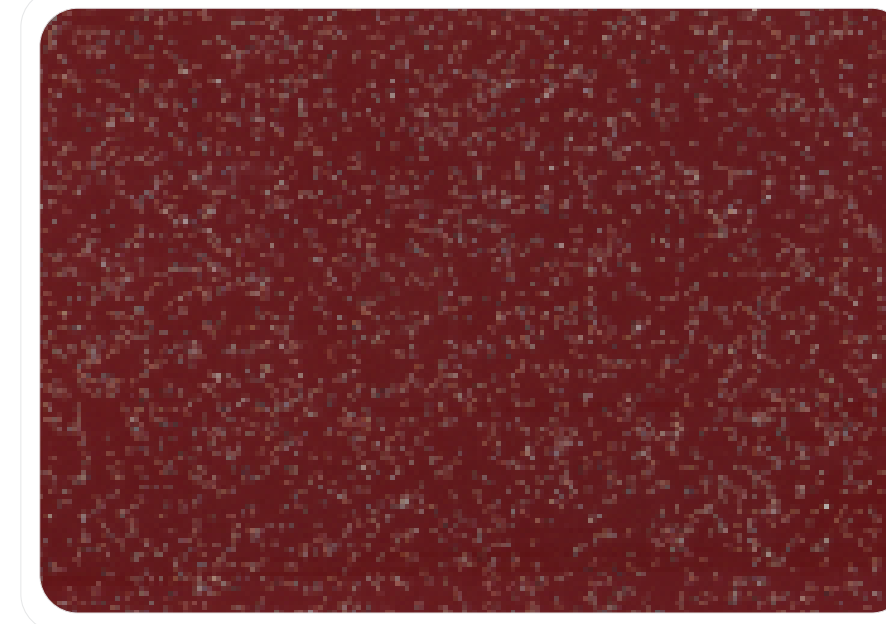


CCC - 505

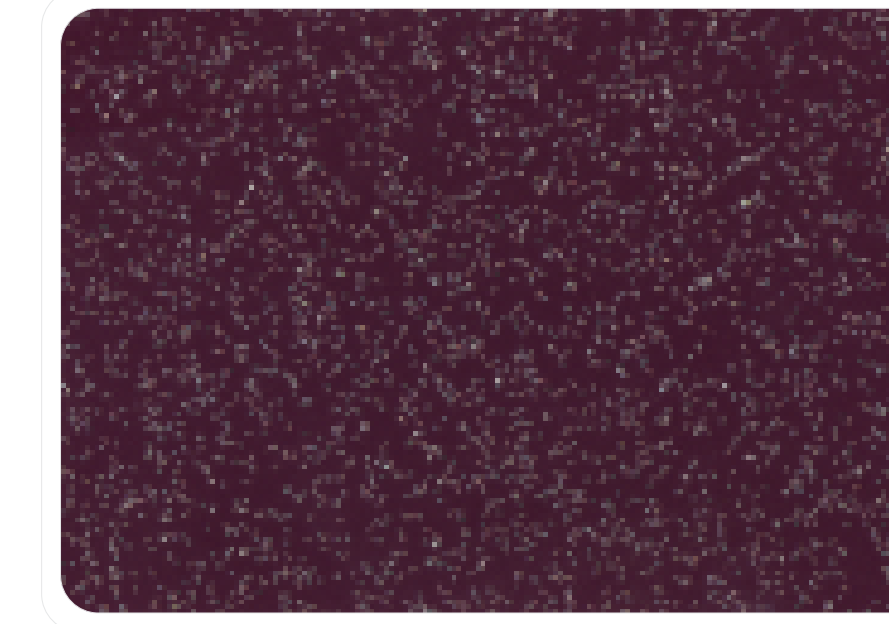


Lend a calm & soothing tint to your space

SPARKLE



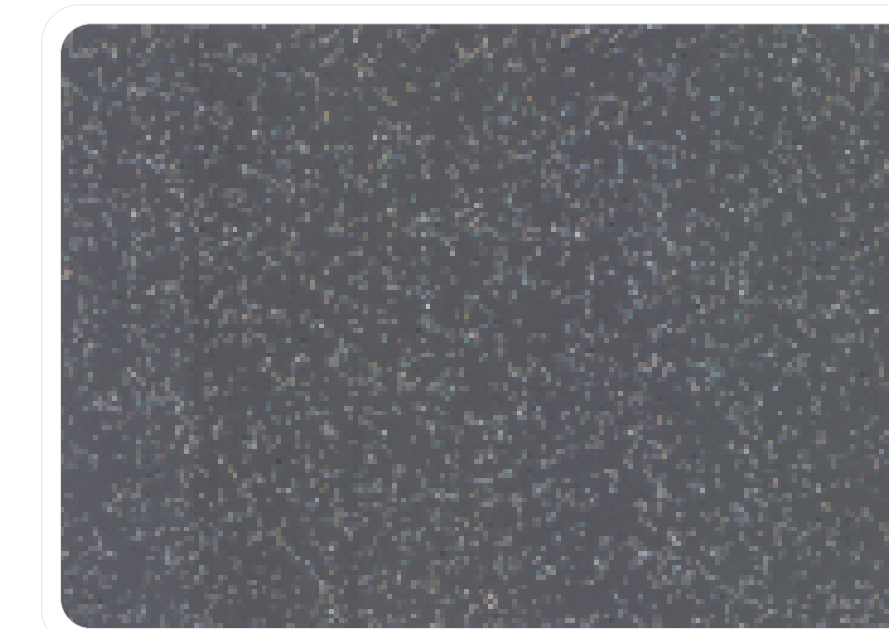
SP - 514



SP - 506



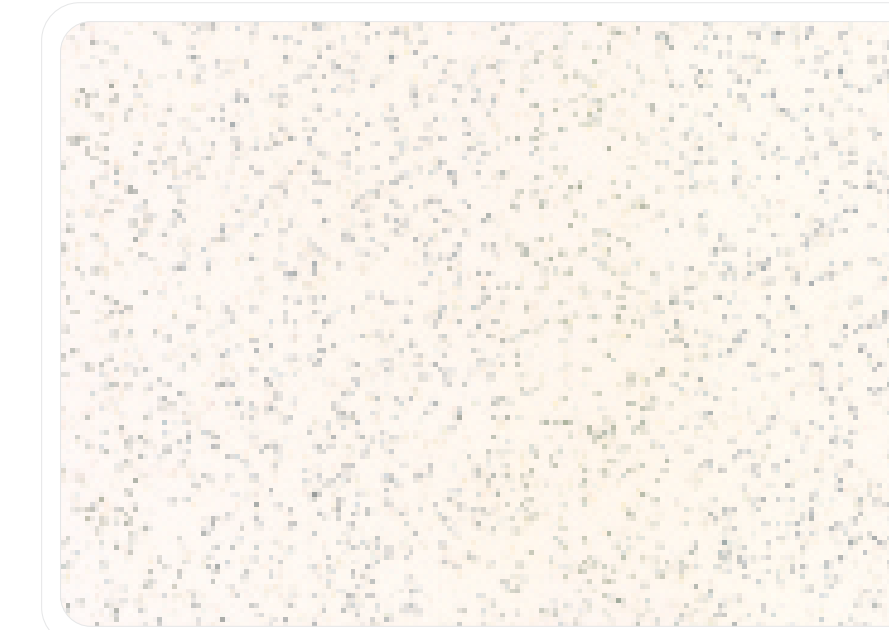
SP - 512



SP - 515



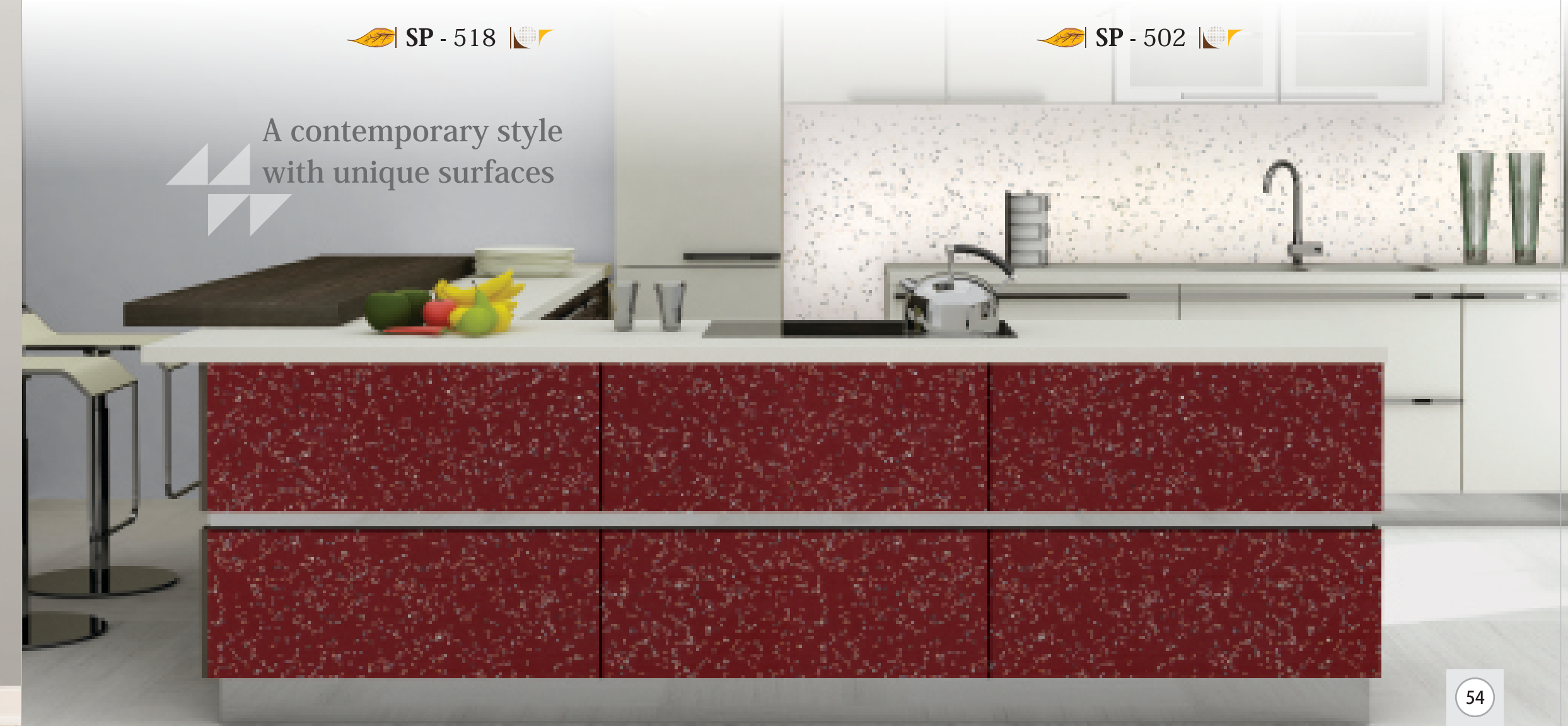
SP - 518



SP - 502



A contemporary style with unique surfaces



MIRROR GLOSS



HGL - 5128



SF - 5128



HGL - 5181



MIRROR GLOSS



NEPLAM®
DECORATIVE LAMINATES



HGL - 5172



HGL - 5178



HGL - 5177

Laminates Valley - Sub Branch Of
PUN VENEERS & LAMINATES

MIRROR GLOSS



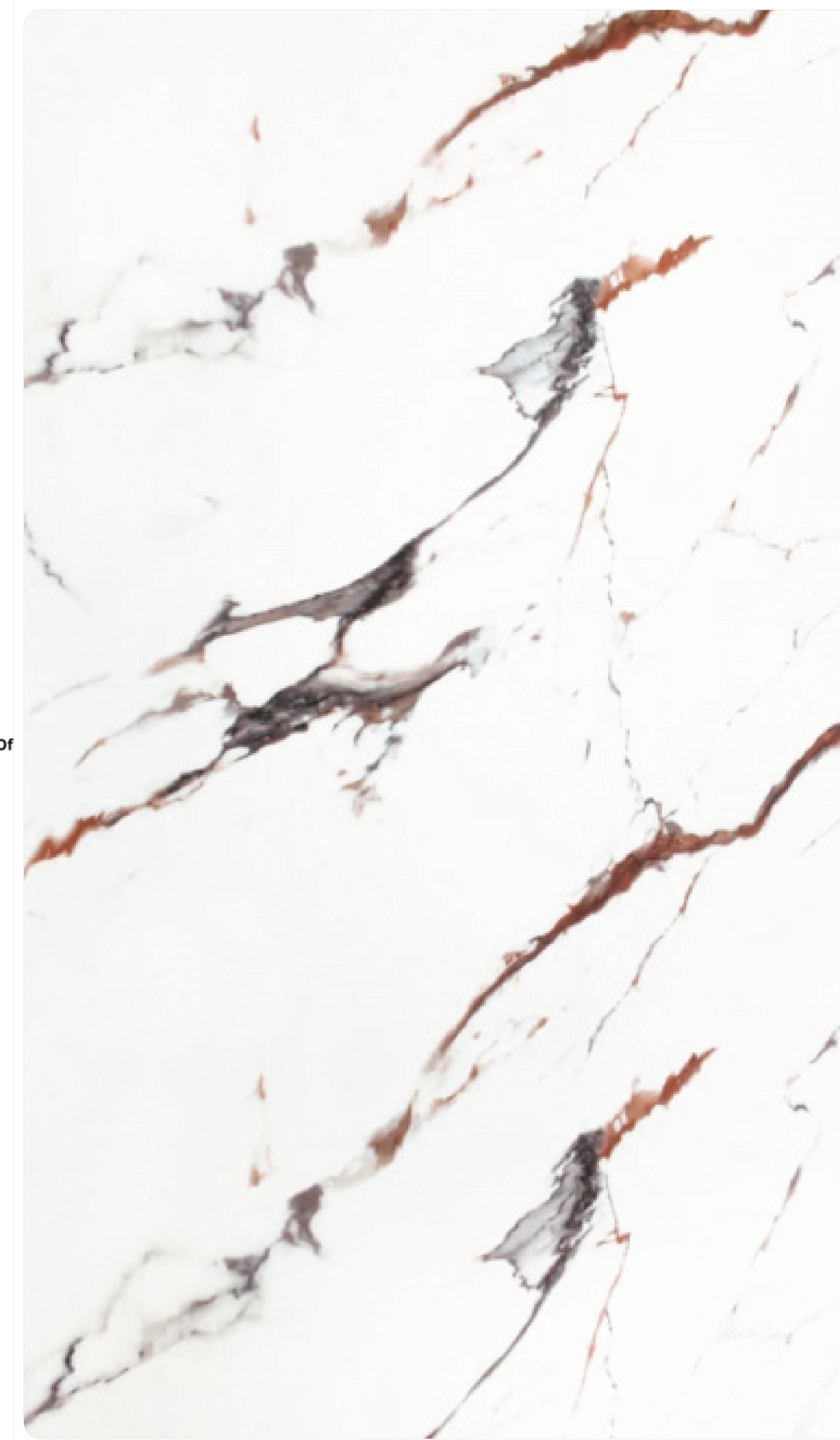
NEPLAM®
DECORATIVE LAMINATES



HGL - 5175



Laminates Valley - Sub Branch Of
PUN VENEERS & LAMINATES



HGL - 5183



HGL - 5174



MIRROR GLOSS



NEPLAM®
DECORATIVE LAMINATES



HGL - 5026



HGL - 5078 HZ

Laminates Valley - Sub Branch Of
PUN VENEERS & LAMINATES



HGL - 5027



HGL - 5176

MIRROR GLOSS



NEPLAM®
DECORATIVE LAMINATES



HGL - 5082



HGL - 5091 HZ



HGL - 5090 HZ

Laminates Valley - Sub Branch Of
PUN VENEERS & LAMINATES



HGL - 5083



HGL - 51126



HGL - 51125

MIRROR GLOSS



NEPLAM®
DECORATIVE LAMINATES



HGL - 5080 HZ



HGL - 5050

Laminates Valley - Sub Branch Of
PUN VENEERS & LAMINATES



HGL - 5079 HZ



HGL - 5052



HGL - 5051

MIRROR GLOSS



NEPLAM®
DECORATIVE LAMINATES



HGL - 51123



HGL - 51124



HGL - 5130



HGL - 5129

Laminates Valley - Sub Branch Of
PUN VENEERS & LAMINATES



HGL - 5179



HGL - 51119



HGL - 51120



Change the mood of your home by giving it a Vintage Impression



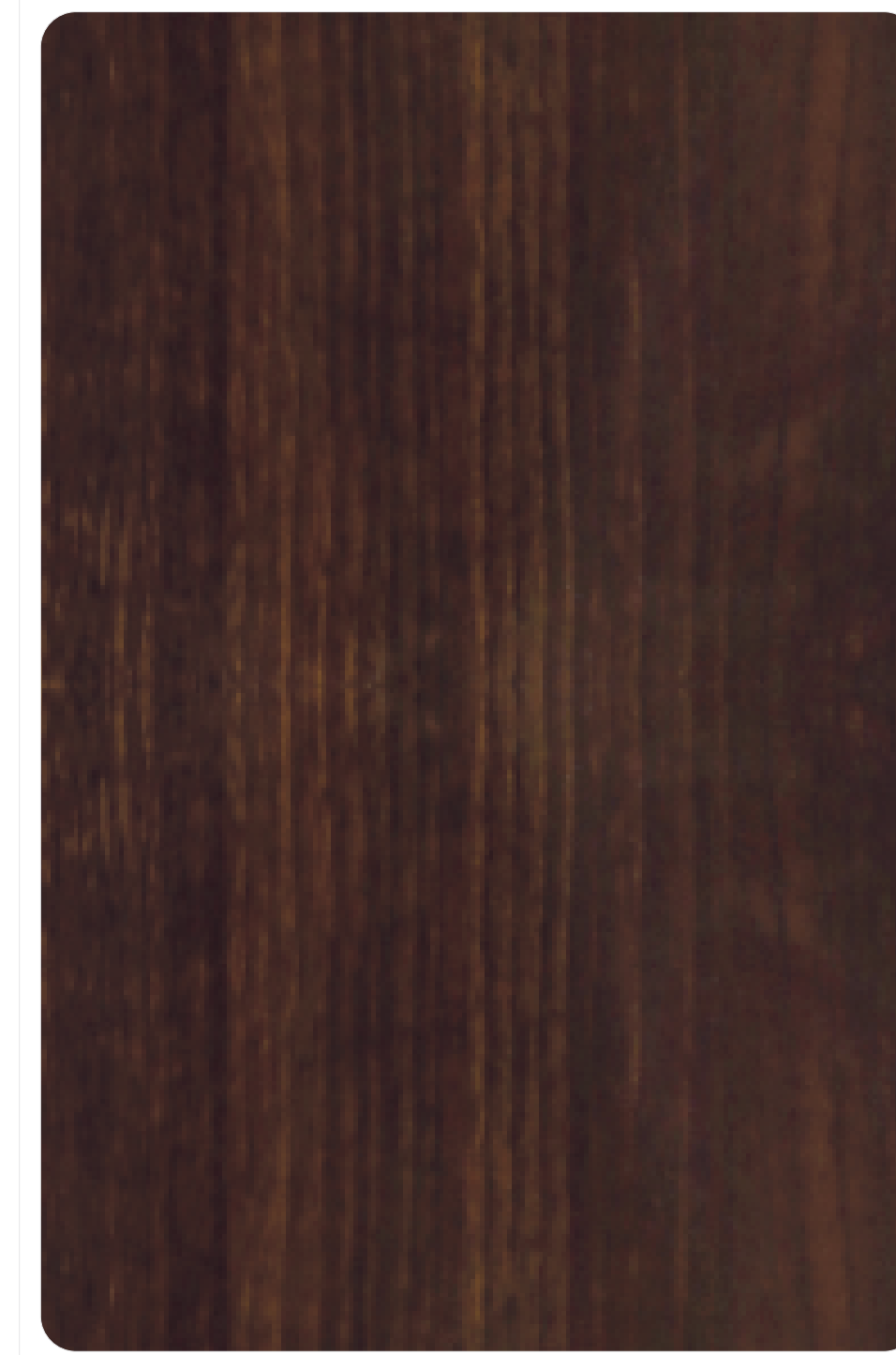
Laminates Valley - Sub Branch Of
PUN VENEERS & LAMINATES

MIRROR GLOSS

NEPLAM[®]
DECORATIVE LAMINATES



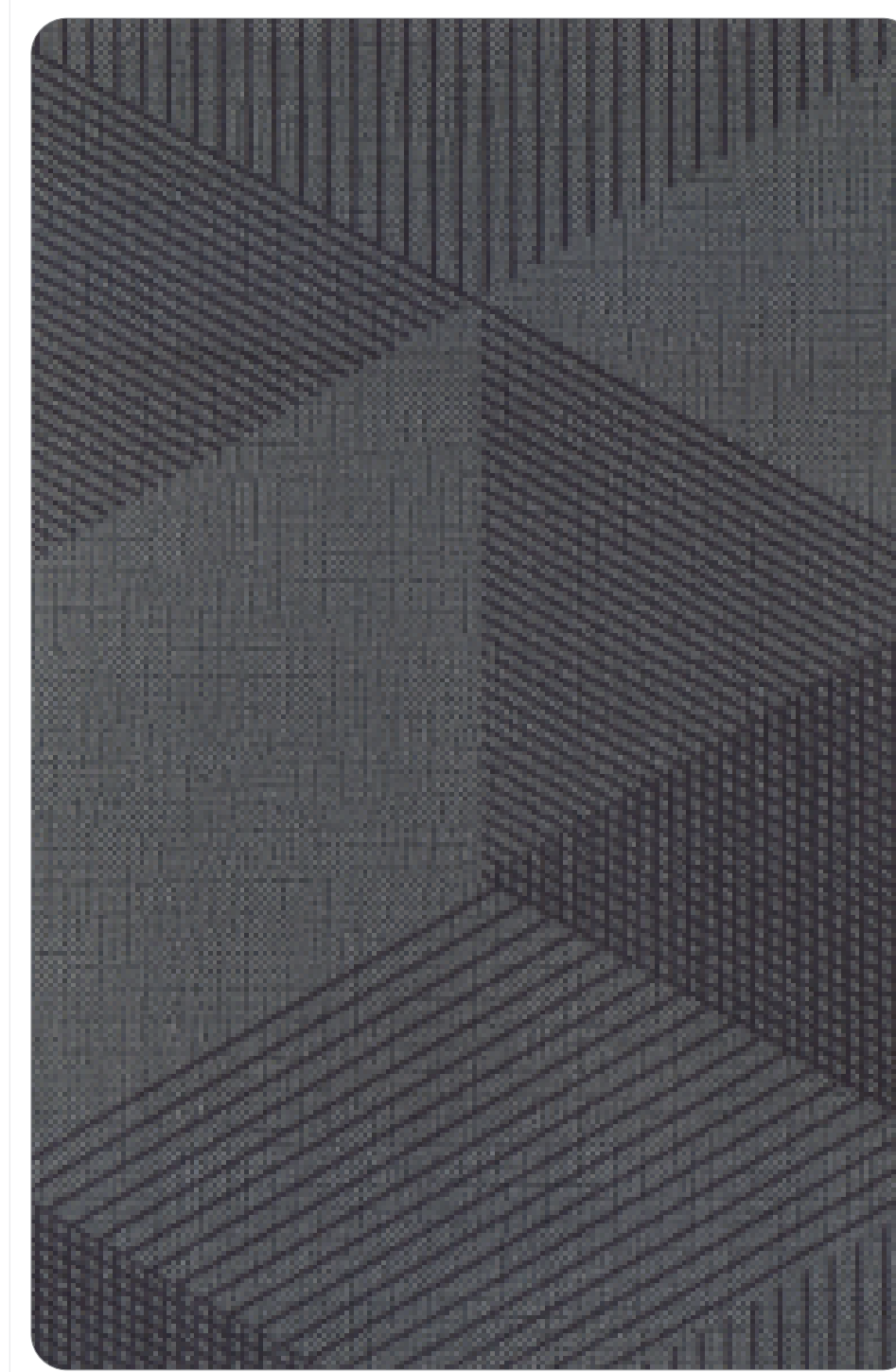
HGL - 5071



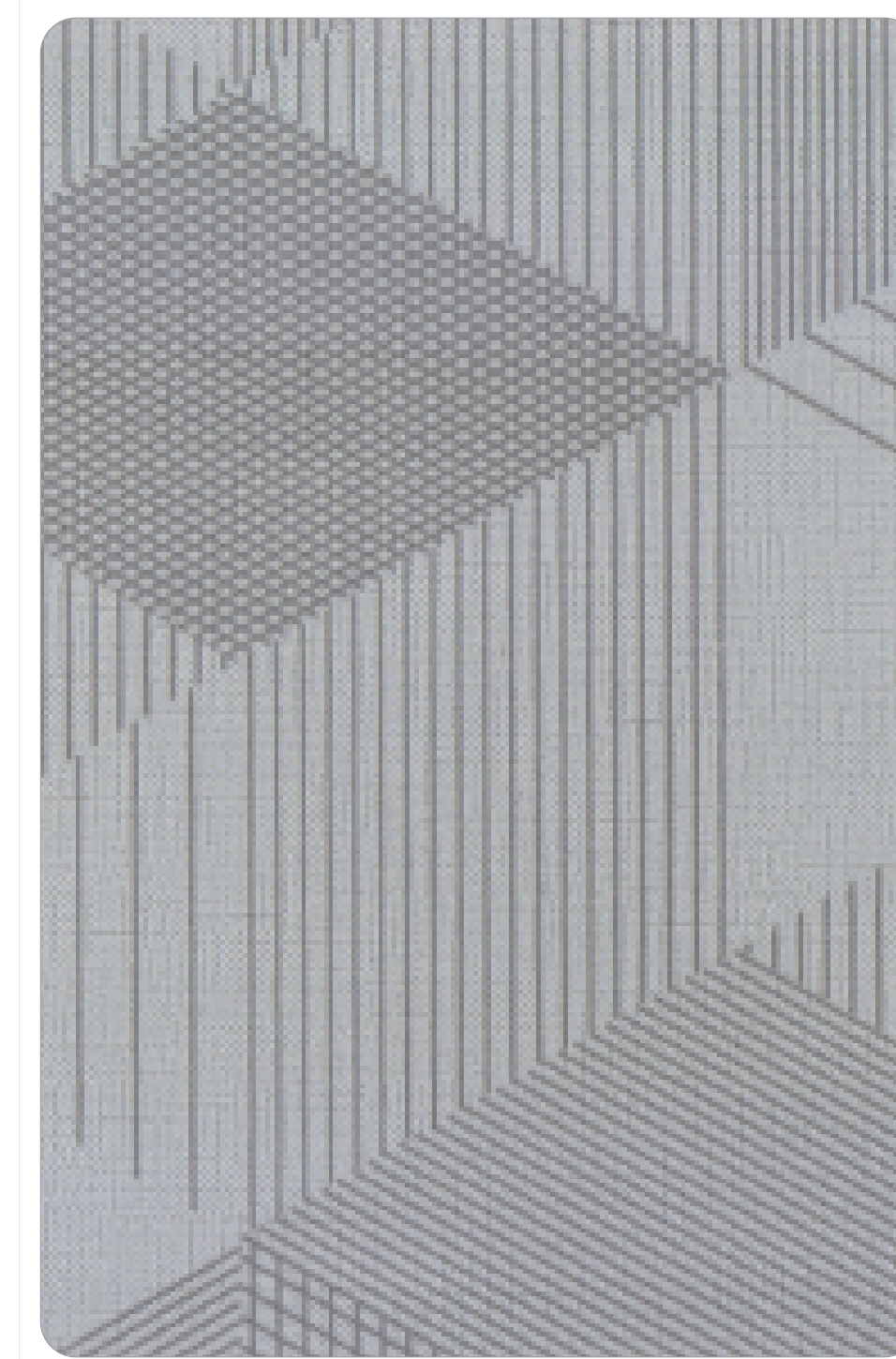
HGL - 5060



HGL - 5173



HGL - 51128



HGL - 51127

SUEDE FINISH



NEPLAM®
DECORATIVE LAMINATES



SF - 5173



SF - 5176



SF - 5172



SF - 5179

Laminates Valley - Sub Branch Of
PUN VENEERS & LAMINATES



SF - 5175



SF - 5174

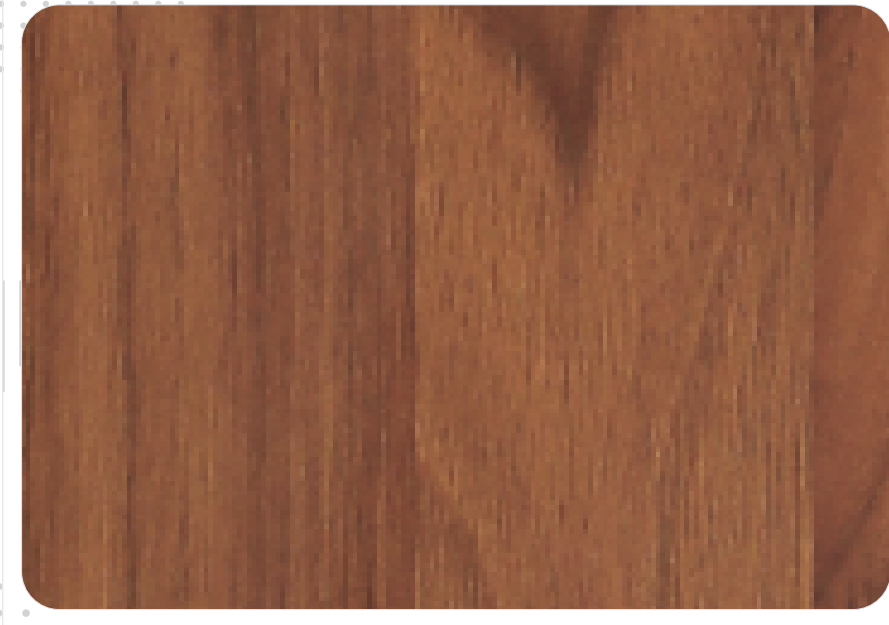


SF - 5130



SF - 5129

SUEDE FINISH



SF - 5050



SF - 5057



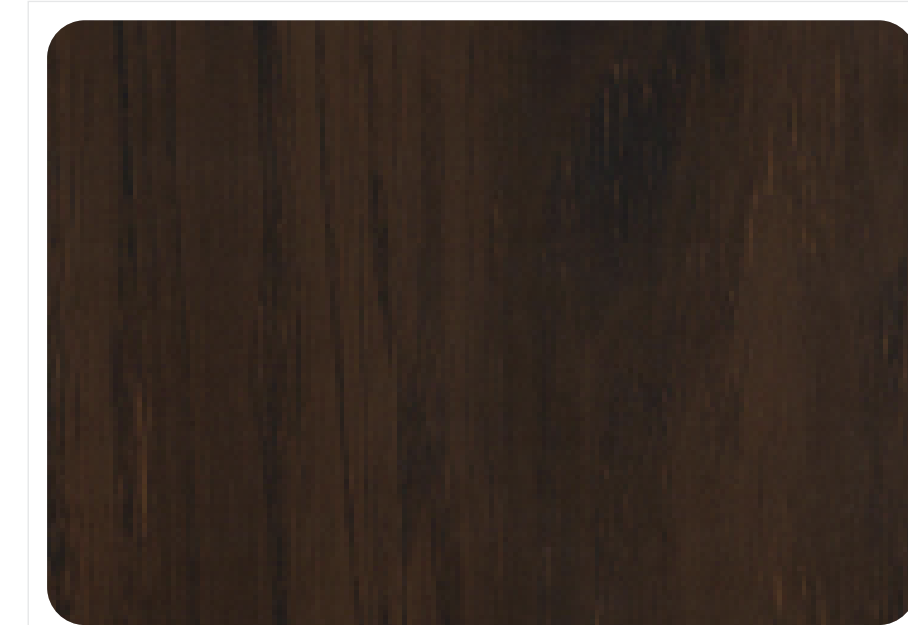
SF - 5082



SF - 51119

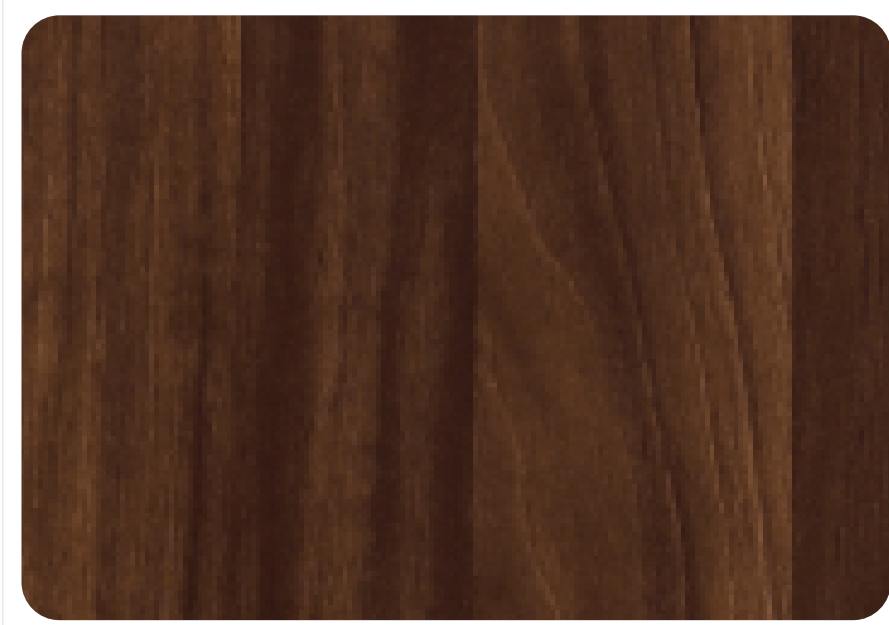


SF - 5052



SF - 51120

Laminates Valley - Sub Branch Of
PUN VENEERS & LAMINATES



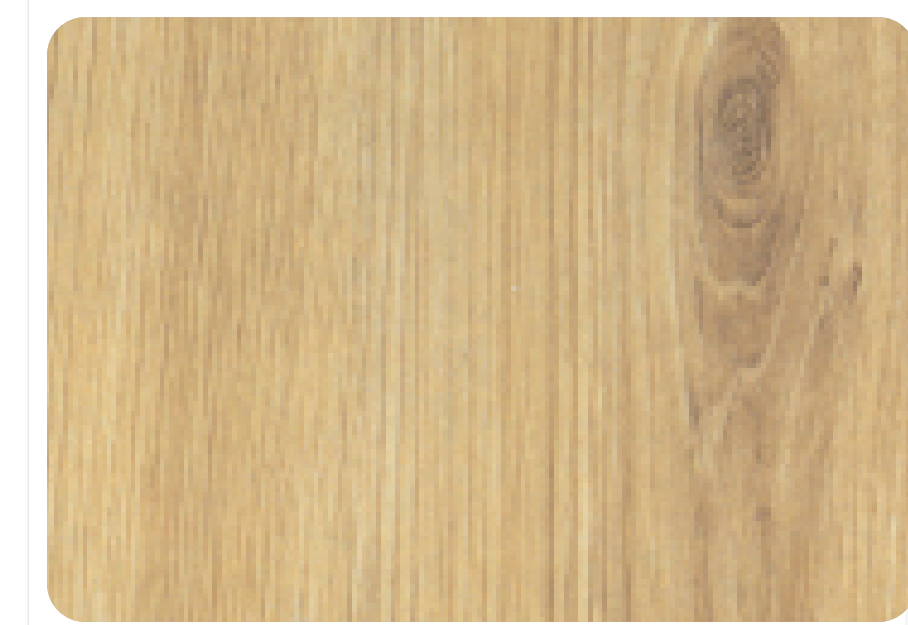
SF - 5051



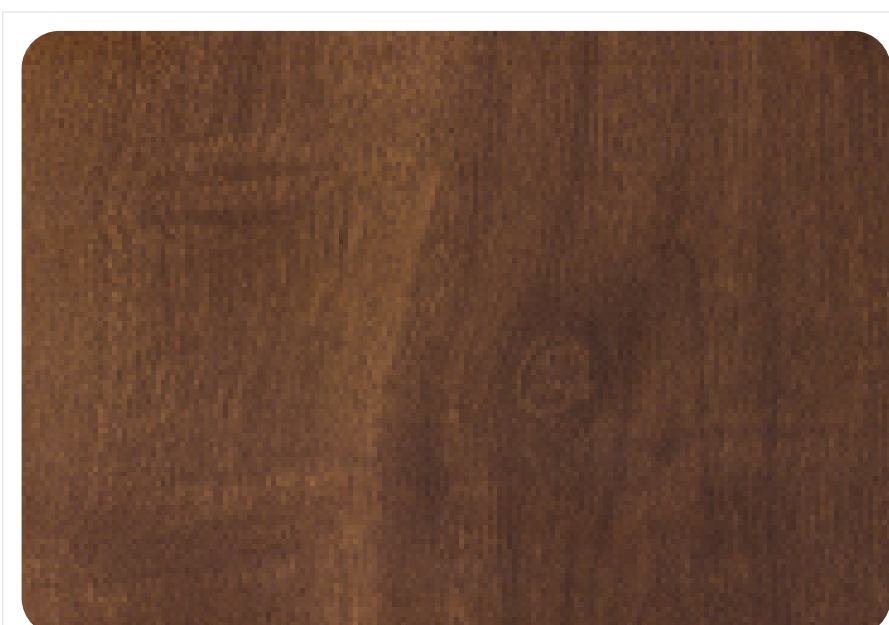
SF - 5081



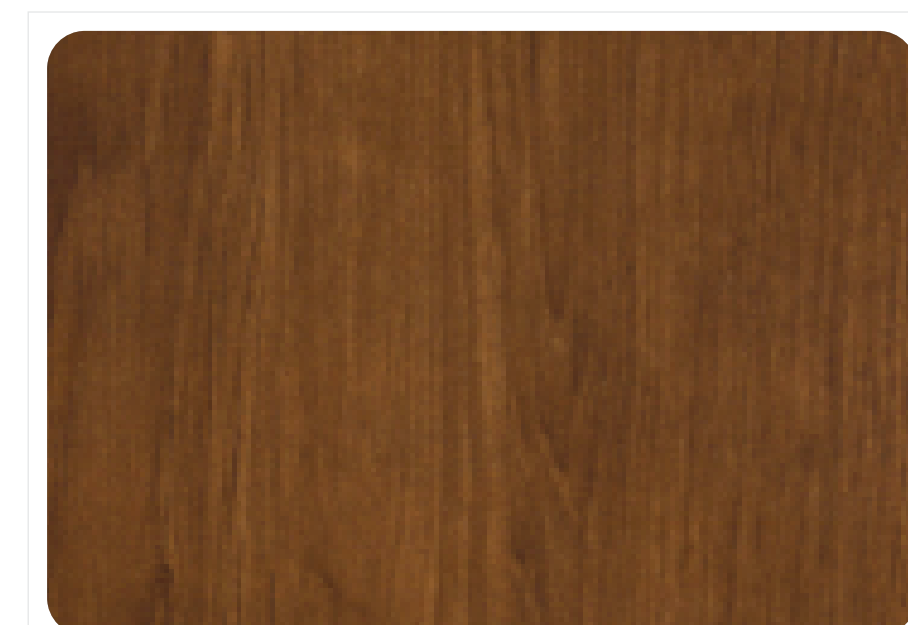
SF - 5083



SF - 51125



SF - 5071



SF - 51126

SUEDE FINISH



SF - 5079



SF - 5080 HZ



SF - 5078

Give your space
an Astounding Appeal



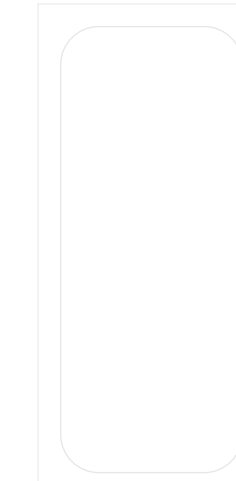
SF - 51123



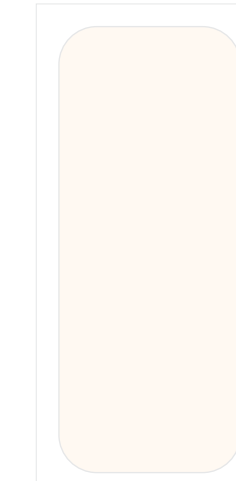
SF - 51124

Laminates Valley - Sub Branch Of
PUN VENEERS & LAMINATES

PLAIN SUEDE FINISH



SF 501



SF 502



SF 504



SF 515



SF 512



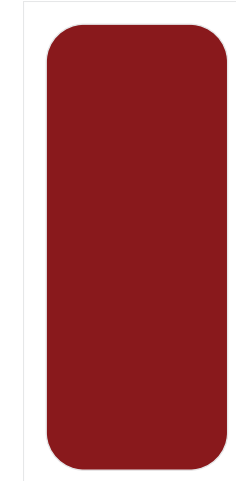
SF 516



SF 511



SF 523



SF 514



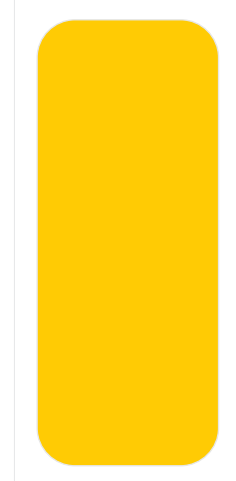
SF 522



SF 507



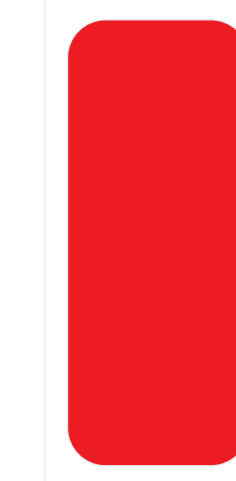
SF 525



SF 513



SF 508



SF 509



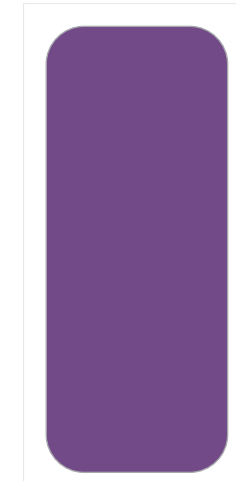
SF 526



SF 505



SF 524



SF 517



SF 506



SF 528



SF 510



SF 518

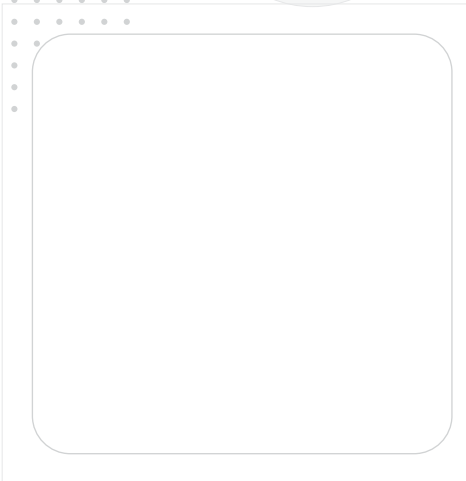


SF 527

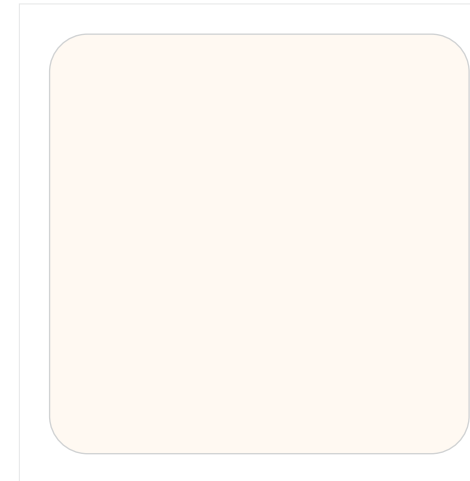


SF 529

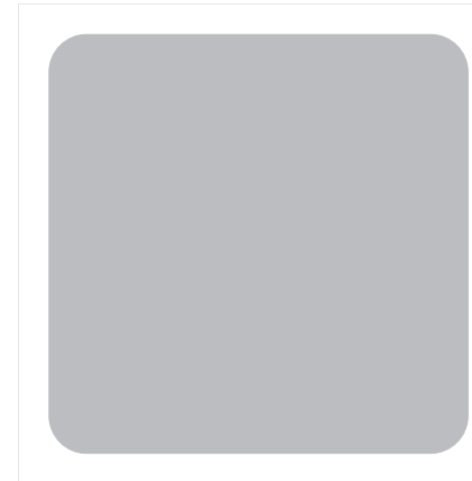
●●● PLAIN MIRROR GLOSS



HGL-501



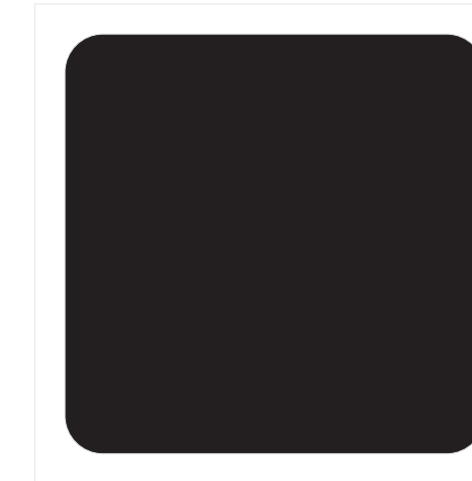
HGL-502



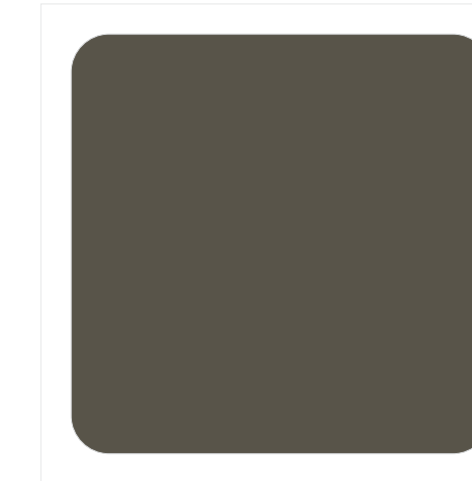
HGL-504



HGL-515



HGL-512



HGL-522



HGL-507



HGL-525



HGL-513



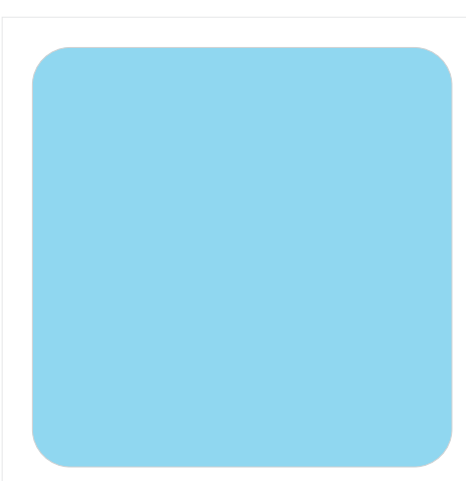
HGL-508



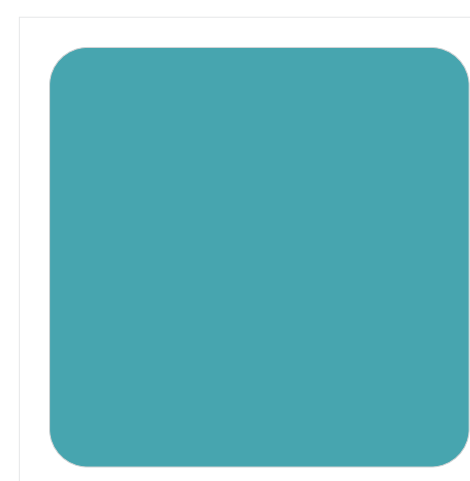
HGL-509



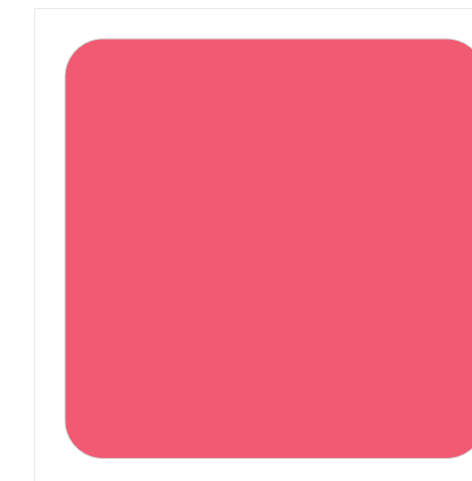
HGL-514



HGL-526



HGL-518



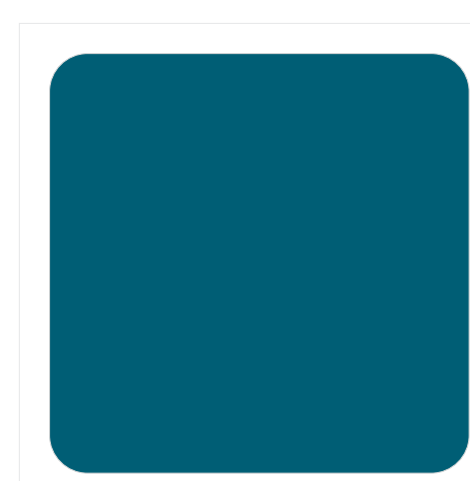
HGL-524



HGL-516



HGL-528



HGL-527



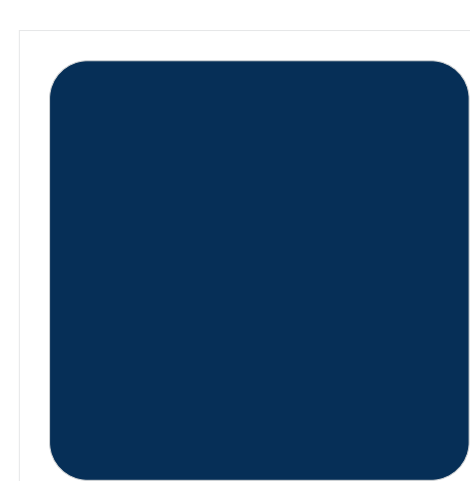
HGL-505



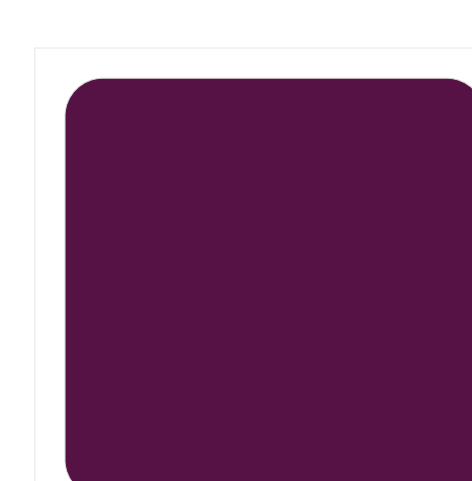
HGL-523



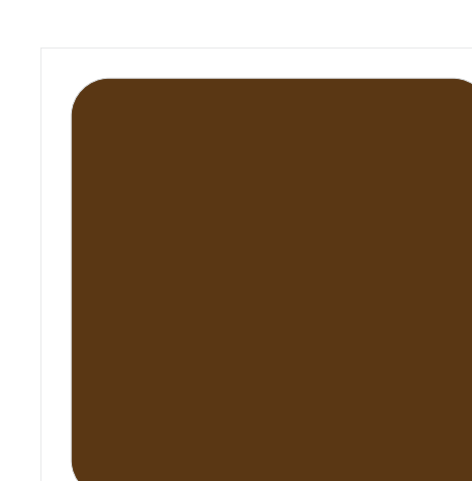
HGL-510



HGL-529



HGL-506



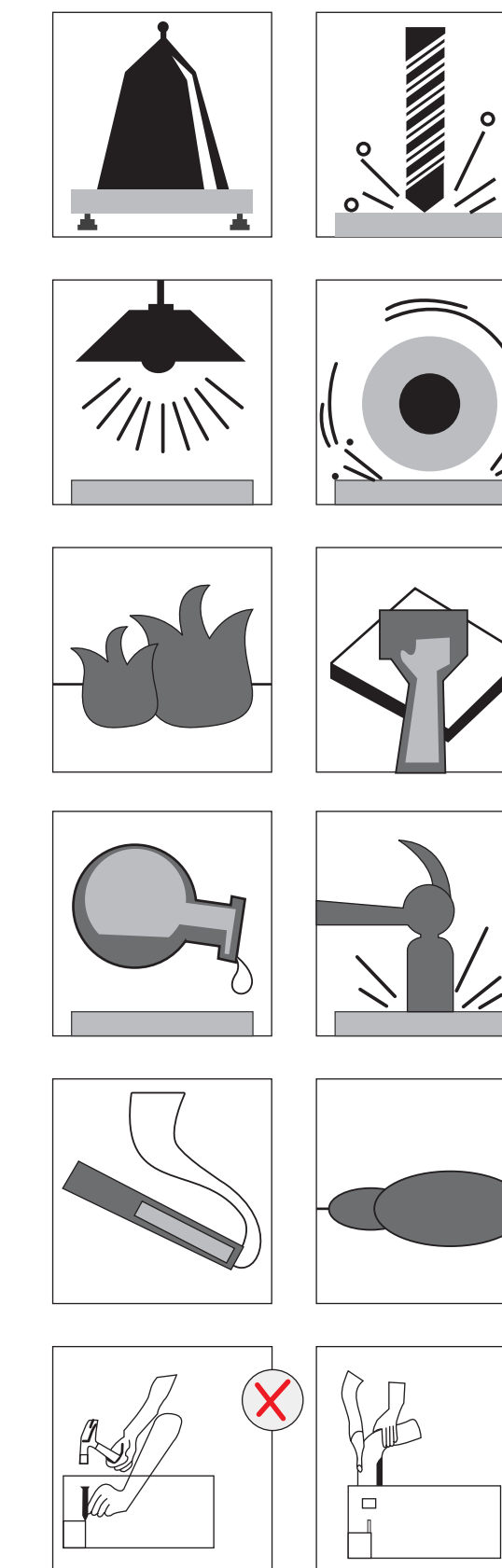
HGL-511

INDEX

SR. No.	FINISH CODE	DESIGN No.	PAGE No.	SR. No.	FINISH CODE	DESIGN No.	PAGE No.	SR. No.	FINISH CODE	DESIGN No.	PAGE No.	SR. No.	FINISH CODE	DESIGN No.	PAGE No.
PEARL GRANITE				COTTAGE ASH				UNI COLOR CORE				SUEDE FINISH			
1	N-43	5181	02	48	N-38	5179	29	93	CCC	512	53	152	SF	5083	74
SHINY ASH				49	N-38	5082	30	94	CCC	515	53	153	SF	51119	74
2	N-54	5173	03	50	N-38	5083	30	SPARKLE				154	SF	51120	74
3	N-54	5026	04	MYSTIC STONE				95	SP	502	54	155	SF	51125	74
4	N-54	5175	04	51	N-52	5178	31	96	SP	506	54	156	SF	51126	74
RUSTIC GLOSS				52	N-52	5177	32	97	SP	512	54	157	SF	5078	75
5	N-27	5178	05	DARK CHOCOLATE ASH				98	SP	514	54	158	SF	5079	75
6	N-27	5177	06	53	N-15	5182	33	99	SP	515	54	159	SF	5080 HZ	75
ZERO HORIZONTAL FINISH				54	N-15	5026	34	100	SP	518	54	160	SF	51123	75
7	N-53	5051 HZ	07	55	N-15	5027	34	MIRROR GLOSS				161	SF	51124	75
8	N-53	5021 HZ	08	56	N-15	5050	35	101	HGL	5128	55	PLAIN SUEDE FINISH			
9	N-53	5164 HZ	08	LEATHER LINE				102	SF	5128	55	162	SF	501	76
HEXAGON 3D				57	N-57	5141	36	103	HGL	5181	56	163	SF	502	76
10	N-50	5175	09	58	N-57	5142	36	104	HGL	5172	57	164	SF	504	76
11	N-50	51119	10	VERTICAL CHANNEL				105	HGL	5177	58	165	SF	505	76
12	N-50	51120	10	59	N-58	5176	37	106	HGL	5178	58	166	SF	506	76
FANTASY ASH				60	N-58	5174	38	107	HGL	5174	59	167	SF	507	76
13	N-55	5076	11	DESERT IRON WOOD				108	HGL	5175	59	168	SF	508	76
14	N-55	5028	12	61	N-39	5063	39	109	HGL	5183	60	169	SF	509	76
HORIZONTAL OAK				62	N-39	5081	39	110	HGL	5026	61	170	SF	510	76
15	N-13	5172 HZ	13	RUSTIC GLOSS				111	HGL	5027	61	171	SF	511	76
16	N-13	5090 HZ	14	66	N-27	5045	40	112	HGL	5078 HZ	62	172	SF	512	76
17	N-13	5091 HZ	14	67	N-27	5046	40	113	HGL	5176	62	173	SF	513	76
18	N-13	5173 HZ	14	LUXURY MATT FINISH				114	HGL	5082	63	174	SF	514	76
PU VENEER				63	N-05	5172	41	115	HGL	5083	63	175	SF	515	76
22	N-56	5172	15	64	N-05	5082	42	116	HGL	5090 HZ	64	176	SF	516	76
23	N-56	5182	15	65	N-05	5083	42	117	HGL	5091 HZ	64	177	SF	517	76
24	N-56	5025	16	VINTAGE WOOD				118	HGL	51125	64	178	SF	518	76
GLORY LINE				68	N-59	5052	43	119	HGL	51126	64	179	SF	522	76
19	N-18	5182 HZ	17	69	N-59	5061	43	120	HGL	5079 HZ	65	180	SF	523	76
20	N-18	5028 HZ	18	EMERALD ASH				121	HGL	5080 HZ	65	181	SF	524	76
21	N-18	5173 HZ	18	70	N-33	5063	44	122	HGL	5050	66	182	SF	525	76
METALLIC PU				71	N-33	5078	44	123	HGL	5051	66	183	SF	526	76
25	N-56	5155	19	72	N-33	5080	44	124	HGL	5052	66	184	SF	527	76
26	N-56	5156	19	ZERO OAK				125	HGL	5179	67	185	SF	528	76
27	N-56	5157	19	73	N-02	5129	45	126	HGL	51123	67	186	SF	529	76
28	N-56	5158	19	74	N-02	5130	45	127	HGL	51124	67	PLAIN MIRROR GLOSS			
PLAIN PU				75	N-02	51126	46	128	HGL	5129	68	187	HGL	501	77
29	N-56	502	20	ORCHID WOOD				129	HGL	5130	68	188	HGL	502	77
30	N-56	515	20	76	N-29	5014	47	130	HGL	51119	68	189	HGL	504	77
31	N-56	516	20	77	N-29	5026	47	131	HGL	51120	68	190	HGL	505	78
LEATHER LINE				78	N-29	51121	47	132	HGL	5173	69	191	HGL	506	78
32	N-57	502	21	RICH SATIN WOOD				133	HGL	5060	70	192	HGL	507	77
33	N-57	512	21	79	N-37	5090 HZ	48	134	HGL	5071	70	193	HGL	508	78
34	N-57	514	21	80	N-37	5091 HZ	48	135	HGL	51127	70	194	HGL	509	78
35	N-57	515	21	TOUCH & FEEL				136	HGL	51128	70	195	HGL	510	77
VINTAGE BLOCKS				81	N-60	502	49	137	SF	5173	71	196	HGL	511	78
36	N-22	5090 HZ	22	82	N-60	506	49	138	SF	5174	71	197	HGL	512	78
37	N-22	5091 HZ	22	83	N-60	5063	49	139	SF	5175	71	198	HGL	513	77
ANTIQUO OAK				84	N-60	51101	50	140	SF	5176	71	199	HGL	514	78
38	N-06	5175	23	85	N-60	51111	50	141	SF	5129	72	200	HGL	515	78
39	N-06	5014	24	BIANCO MARBLE				142	SF	5130	72	201	HGL	516	78
40	N-06	5059	24	86	N-46	5183	51	143	SF	5172	72	202	HGL	518	77
41	N-06	5172	25	SOFT OAK				144	SF	5179	72	203	HGL	522	78
42	N-06	5057	26	87	N-20	5079 HZ	52	145	SF	5050	73	204	HGL	523	78
43	N-06	5081	26	88	N-20	5082 HZ	52	146	SF	5051	73	205	HGL	524	78
HORIZONTAL WOOD				UNI COLOR CORE				147	SF	5052	73	206	HGL	525	77
44	N-32	5010	27	89	CC	502	53	148	SF	5057	73	207	HGL	526	77
45	N-32	5011	27	90	CCC	505	53	149	SF	5071	73	208	HGL	527	77
STONEX				91	CCC	506	53	150	SF	5081	73	209	HGL	528	77
46	N-17	51113	28	92	CCC	509	53	151	SF	5082	74	210	HGL	529	77
47	N-17	51114	28												

TECHNICAL SPECIFICATION

Sr. No.	PROPERTIES	UNITS	SPECIFIED VALUE AS PER IS 2046-1995 type S, VGS	Obtained
1	Thickness	mm	1.0(±10%)	1.0(±10%)
2	Resistance to Surface Wear	Rev	150(Revolution)	180
3	Resistance to immersions boiling water			
	- Mass increase(%)	%	12.0(Maximum)	5
	- Thickness increase(%)	%	14.0(Maximum)	7
	- Appearance		Not Worse than 4	5
4	Dimensional Stability at deviated temperature			
	- Longitudinal (%)	(L)%	0.625(Maximum)	0.4
	- Transverse(%)	(L)%	1.10(Maximum)	0.74
5	Dimensional Stability at 20°C			
	- Longitudinal (%)	(L)%	0.425(Maximum)	0.3
	- Transverse(%)	(T)%	0.625(Maximum)	0.5
6	Resistance to impact by Small Diameter ball	N	20 (Minimum)	30
7	Resistance to Cracking	Grade	Not Worse than 4	5
8	Resistance to Scratching	N	1.75 (Minimum)	2
9	Resistance to Staining	Grade		
	a) Group 1 & 2		Not Worse than 5	5
	a) Group 3 & 4		Not Worse than 4	5
10	Resistance to color change - in enclosed carbon are light	Grade		
			Not Worse than 5	5
11	Resistance to Steam	Grade		
			Not Worse than 4	5
	Resistance to Cigarette burn	Grade		
			Not Worse than 3	3



Do not use nail and hammer while cutting such corner, grove, angle, designs.
Use only drill while cutting such corner, grove, angle, designs.

Product Information
Technical Name : High Pressure Decorative Laminated Sheet
Size : 2440 mm X 1220 mm

Warranty :
- NEPLAM warrants that all its products are free from manufacturing defects.
- The Products when properly used will vary with normal Deviation, to related manufacturing specifications.
- In case of any claims, the liability of the company is limited to the cost of the product only.
- Any Complaints, due to changes in climatic conditions will not be entertained by the company.
- The warranty shall not be applied to defects or damage from any of the following:-
Accidents, abuse or misuse, exposure to extreme fabrication or installation & improper maintenance.

Care and Maintenance :
- Storage : Sheets should be stored horizontally with the top sheet turned face down and a thick hard board placed on top to protect the material from possible damage and reduce the chance of getting warped store laminate stock should not be rotated such that order sheets will be used first. Laminate sheet should be protected from moisture, and should never be stored where they may come in contact with the floor or outside wall. Always carry the sheets vertically. Never slide the sheet but lift it while moving it from one place to another. Keep in mind that ideally two people should carry a full size sheet as carelessness can damage the decorative surface.

- Abrasives : Abrasive pads, scouring powders or cleansers may permanently damage the laminates surface making it susceptible to staining.
- Harsh Chemicals : Harsh Chemicals such as oven cleaner, toilet cleaner or drain cleaner will etch and discolor the decorative surface. High pressure Decorative Laminates are not designed to resist continual contact with these chemicals. If any of these products spill over the surface, then remove immediately, rinse thoroughly, and wipe dry.
- High Temperature Appliance : Protect the surface from heat generating instrument such as pressing irons & electric cookers by using Insulated Pad.
- Sharp Objects : Never use knives or other sharp objects directly on the decorative surface.
- Impact : Even though high Pressure Decorative Laminates have excellent impact resistance, chipping or cracking may occur. Do not abuse the high pressure decorative Laminates by dropping heavy objects such as cans, dinnerware, or glasses or deliberately hammering directly on the surface.
- Resistance to : Boiling water, hot oil, direct heat, phenol, mild acid, rectified spirit, ink, etc.

Cleaning
- To clean the surface use damp cloth or sponge and a mild soap or detergent.
- Coffee or tea can be removed using a mild household cleaner/detergent and a soft bristle brush immediately on the surface.

Note :
- Please check Laminate sheet before use.
- No claim will be entertained after using Laminate sheet.

